

*TANKER*  
*VESSELS*

*CVIT GLOBAL SHIPMENT FZCO*



*CPP VESSELS*

*Clean Petroleum*

*Products*



**3,450 CBM**  
**TANKER VESSEL**

**CPP: FOR CHARTER**

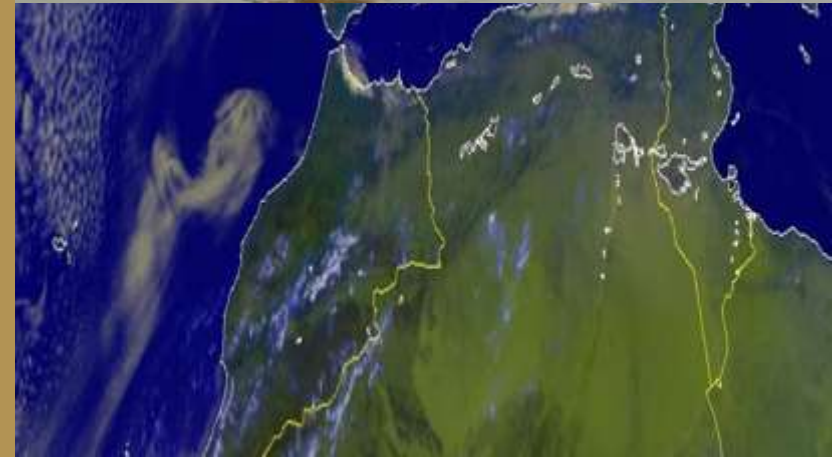


# 3,450 CBM TANKER VESSEL

Code: CVIT94137

## TECHNICAL DETAILS:

- YEAR OF BUILD: 2017
- TOTAL CUBIC CAPACITY (98%): 3,450
- CARGO TYPE: CPP
- RECENT ACTIVITIES ON:
- RECENT LOCATION: West Coast of India
- OPEN TERMS:

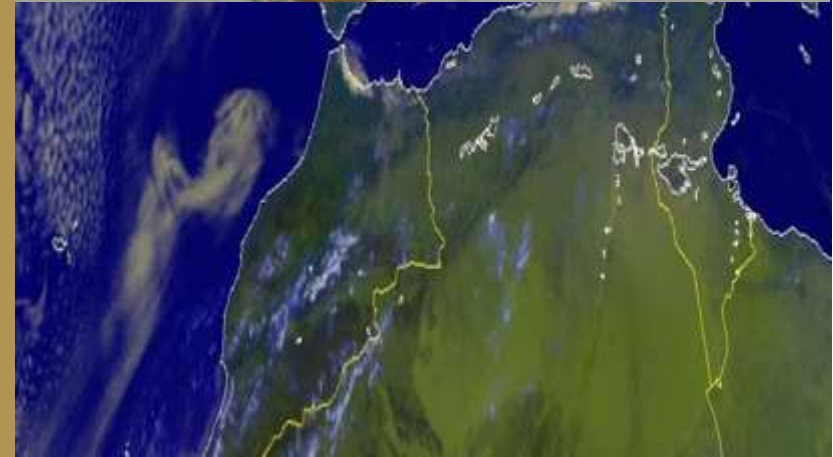


## 3,450 CBM TANKER VESSEL

Code: CVIT94137

### MORE TECHNICAL SPECIFICATIONS:

- LOA: 85
- LBP: 81
- Breadth: 14
- Draft: 7
- Depth: 9
- Deadweight: 3,750
- Net Tonnage: 995
- Gross Tonnage: 2,165
- Total Cubic Capacity: 3,450
- Cargo Pump: Screw Type, 2 x 400 CBM/HR
- Hull Type: Double Hull
- Propeller: 1 Controllable Pitch
- Speed: 10.9 kn



# 3,450 CBM TANKER VESSEL

Code: CVIT94137





**3,670 CBM**  
**TANKER VESSEL**

**CPP: FOR CHARTER**

# 3,670 CBM TANKER VESSEL

Code: CVIT94133

## TECHNICAL DETAILS:

- YEAR OF BUILD: 2013
- NUMBER OF CARGO TANKS / TOTAL CUBIC CAPACITY (98%): 10 / 3,670 CBM
- CARGO TYPE: CPP
- RECENT ACTIVITIES ON:
- RECENT LOCATION: Gulf Area
- OPEN TERMS:





## 3,670 CBM TANKER VESSEL

Code: CVIT94133

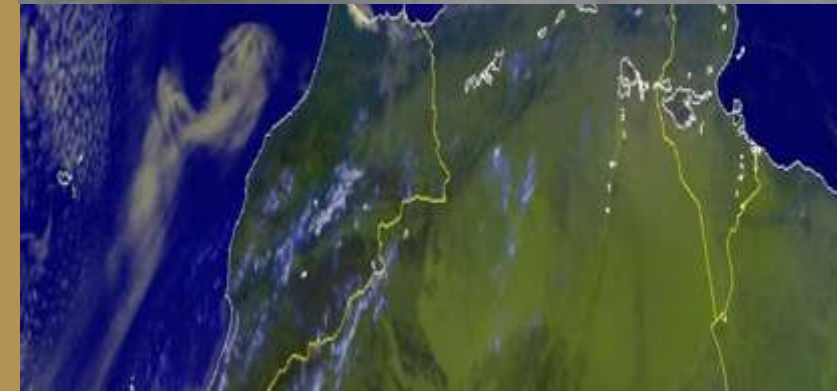
### MORE TECHNICAL SPECIFICATIONS:

- LOA: 90
- LBP: 84
- Breadth: 15
- Draft: 7
- Depth: 9
- Deadweight: 3,530
- Net Tonnage: 1,045
- Gross Tonnage: 2,335
- Number of Cargo Tanks: 10
- Total Cubic Capacity: 3,670
- Cargo Pump: 3 (2 x 500 CBM/HR and 1 x 300 CBM/HR)
- Hull Type: Double Hull
- Propeller: 1 Screw Propeller
- Speed: 11.1 kn



# 3,670 CBM TANKER VESSEL

Code: CVIT94133



**7,280 CBM  
TANKER VESSEL**

**CPP: FOR CHARTER**

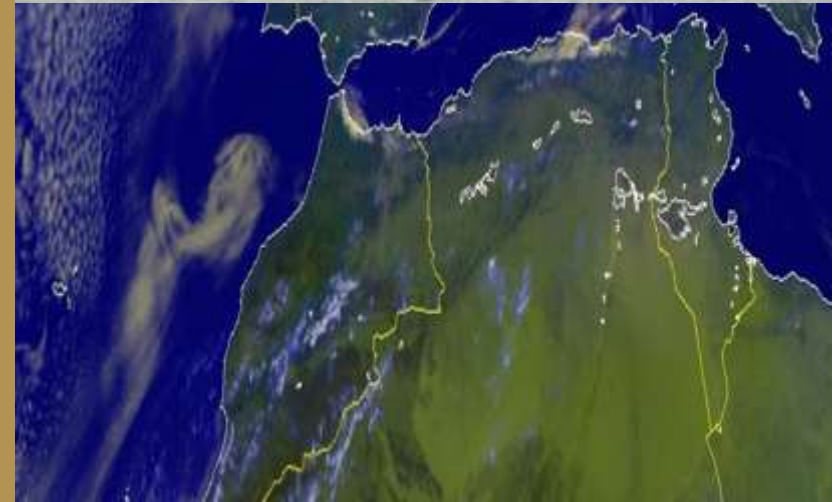


# 7,280 CBM TANKER VESSEL

Code: CVIT94138

## TECHNICAL DETAILS:

- YEAR OF BUILD: 2008
- NUMBER OF CARGO TANKS AND TOTAL CUBIC CAPACITY (98%): 5/7,280 CBM
- CARGO TYPE: CPP
- RECENT ACTIVITIES ON: DIESEL
- RECENT LOCATION: Oman Sea
- OPEN TERMS: TC

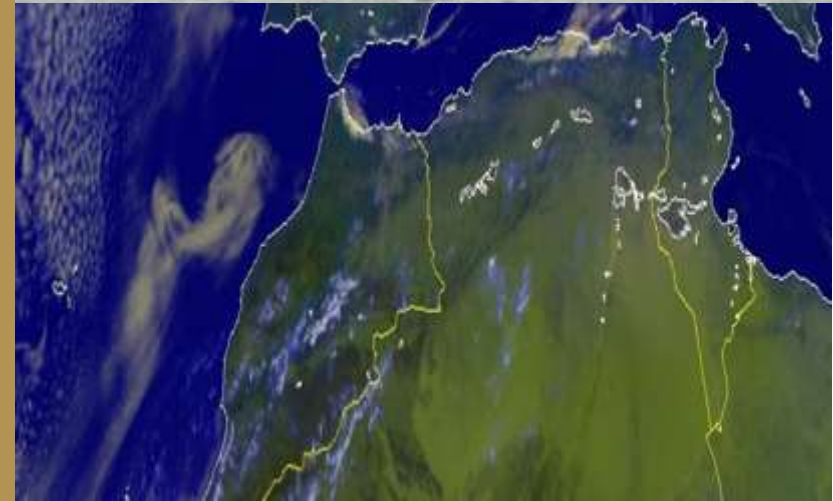


# 7,280 CBM TANKER VESSEL

Code: CVIT94138

## MORE TECHNICAL SPECIFICATIONS:

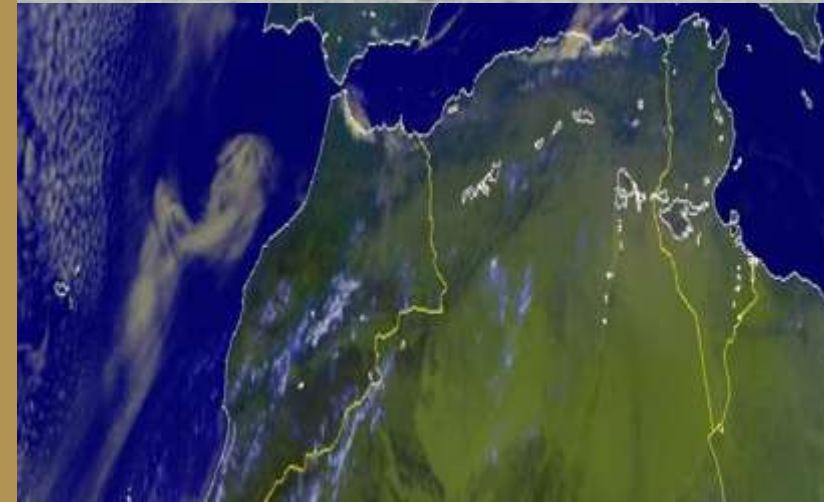
- LOA: 101
- LBP: 95
- Breadth: 19
- Draft: 7
- Depth: 11
- Deadweight: 7,000
- Net Tonnage: 1,955
- Gross Tonnage: 5,030
- Number of Cargo Tanks: 5
- Total Cubic Capacity: 7,280
- Cargo Pump: Screw Type, 2 x 1,000 CBM/HR
- Hull Type: Double Hull
- Propeller: 2 Fixed Pitch
- Speed: 11.3 kn





# 7,280 CBM TANKER VESSEL

Code: CVIT94138





**13,400 CBM  
TANKER VESSEL**

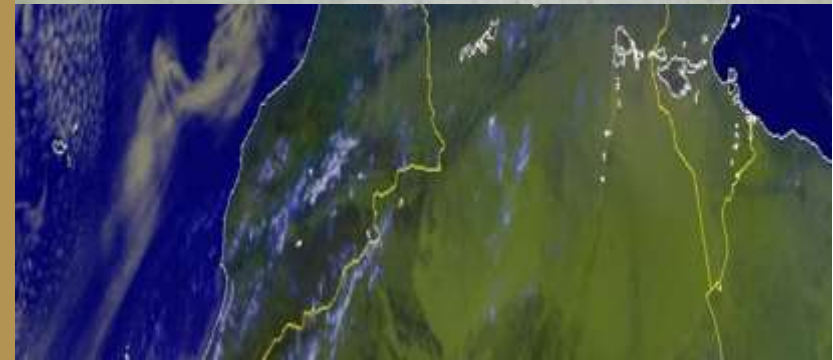
**CPP: FOR CHARTER**

# 13,400 CBM TANKER VESSEL

Code: CVIT94144

## TECHNICAL DETAILS:

- YEAR OF BUILD: 2007
- NUMBER OF CARGO TANKS / TOTAL CUBIC CAPACITY (98%): 12 / 13,400 CBM
- CARGO TYPE: CPP
- RECENT ACTIVITIES ON: GASOIL
- RECENT LOCATION: Gulf Area
- OPEN TERMS: TC + Voyage



# 13,400 CBM TANKER VESSEL

Code: CVIT94144

## MORE TECHNICAL SPECIFICATIONS:

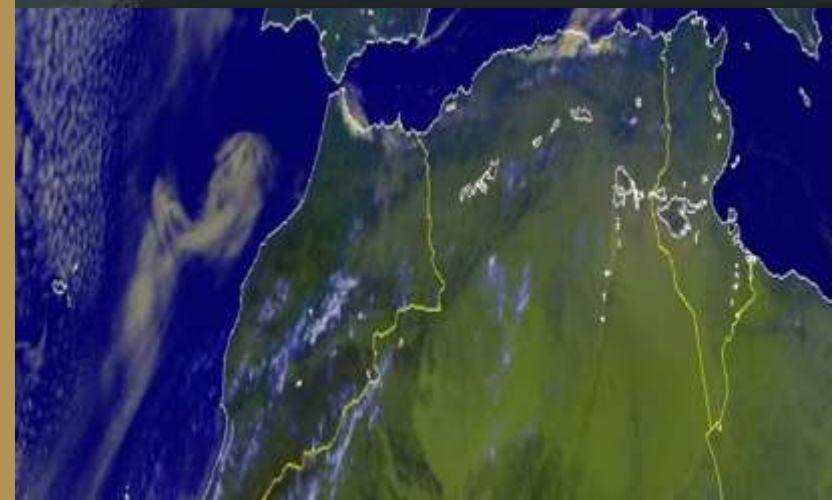
- LOA: 130
- LBP: 121
- Breadth: 22
- Draft: 9
- Depth: 12
- Deadweight: 13,080
- Net Tonnage: 4,115
- Gross Tonnage: 8,535
- Number of Cargo Tanks: 12
- Total Cubic Capacity: 13,400
- Ballast Pump: Centrifugal, 2 x 350 CBM/HR
- Hull Type: Double Hull
- Propeller: 1 Screw Propeller
- Speed: 13.3 kn





# 13,400 CBM TANKER VESSEL

Code: CVIT94144



**22,130 CBM  
TANKER VESSEL**

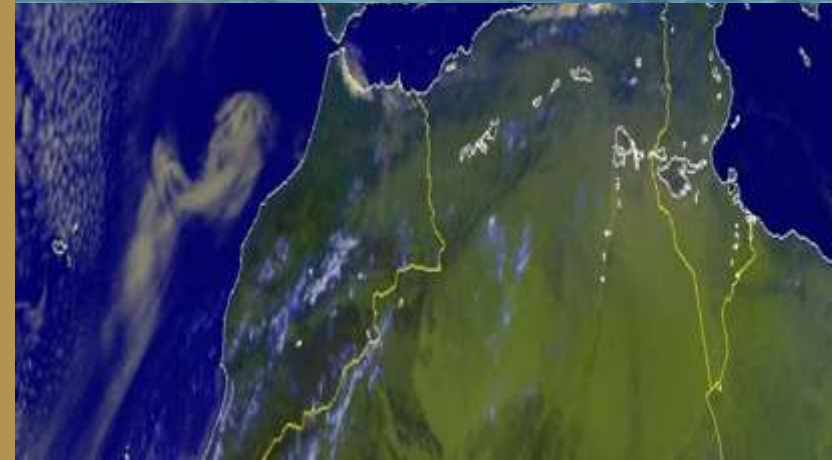
**CPP: FOR CHARTER**

# 22,130 CBM TANKER VESSEL

Code: CVIT94161

## TECHNICAL DETAILS:

- YEAR OF BUILD: 2021
- NUMBER OF CARGO TANKS / TOTAL CUBIC CAPACITY (98%): 18 / 22,130 CBM
- CARGO TYPE: CPP
- RECENT ACTIVITIES ON:
- RECENT LOCATION: Mediterranean Sea
- OPEN TERMS:



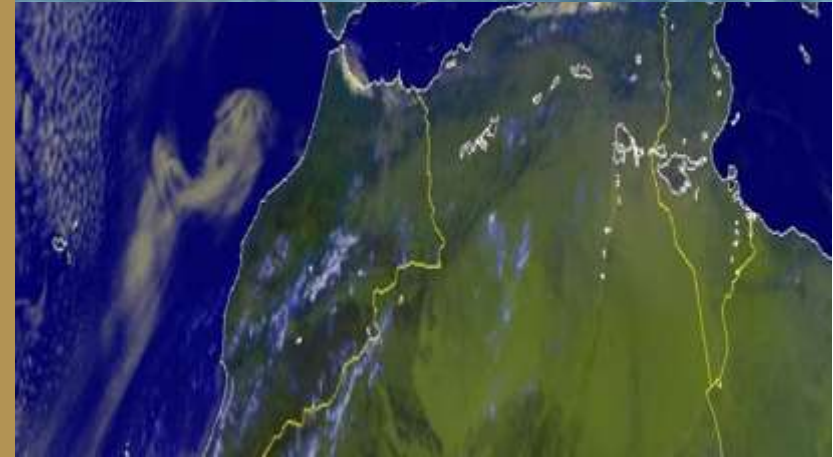


# 22,130 CBM TANKER VESSEL

Code: CVIT94161

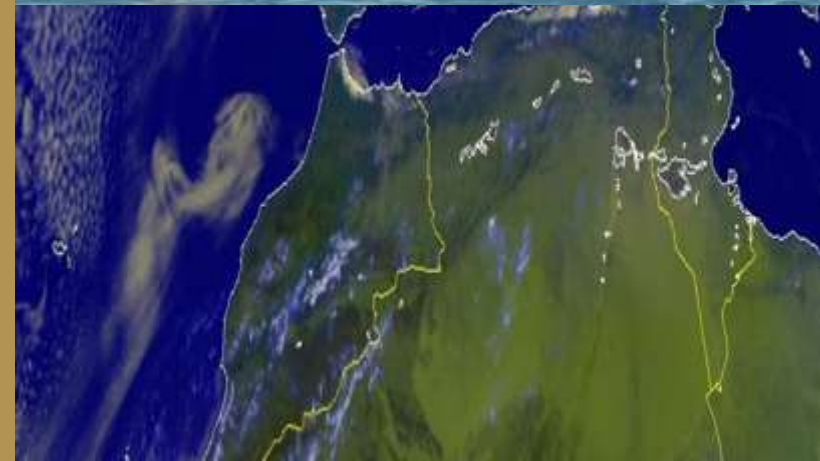
## MORE TECHNICAL SPECIFICATIONS:

- LOA: 147
- LBP: 140
- Breadth: 25
- Draft: 10
- Depth: 15
- Deadweight: 19,845
- Net Tonnage: 6,070
- Gross Tonnage: 11,760
- Number of Cargo Tanks: 18
- Total Cubic Capacity: 22,130
- Cargo Pump: Centrifugal, 12 x 250 and 6 x 200 CBM/HR
- Hull Type: Double Hull
- Propeller: Fixed Pitch Propeller
- Speed: 15.2 kn



# 22,130 CBM TANKER VESSEL

Code: CVIT94161



**36,730 CBM  
TANKER VESSEL**

**CPP: FOR CHARTER**

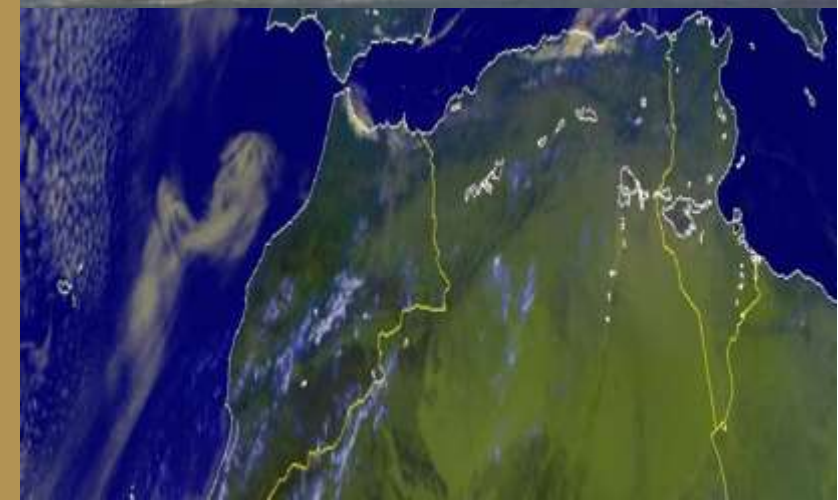


# 36,730 CBM TANKER VESSEL

Code: CVIT94151

## TECHNICAL DETAILS:

- YEAR OF BUILD: 2002
- NUMBER OF CARGO TANKS / TOTAL CUBIC CAPACITY (98%): 5 / 36,730 CBM
- CARGO TYPE: CPP
- RECENT ACTIVITIES ON: Diesel
- RECENT LOCATION: Gulf Area
- OPEN TERMS: TC

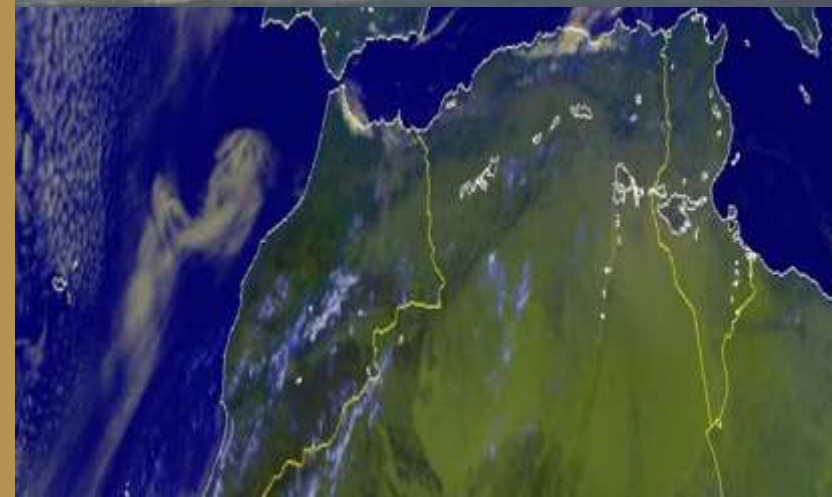


# 36,730 CBM TANKER VESSEL

Code: CVIT94151

## MORE TECHNICAL SPECIFICATIONS:

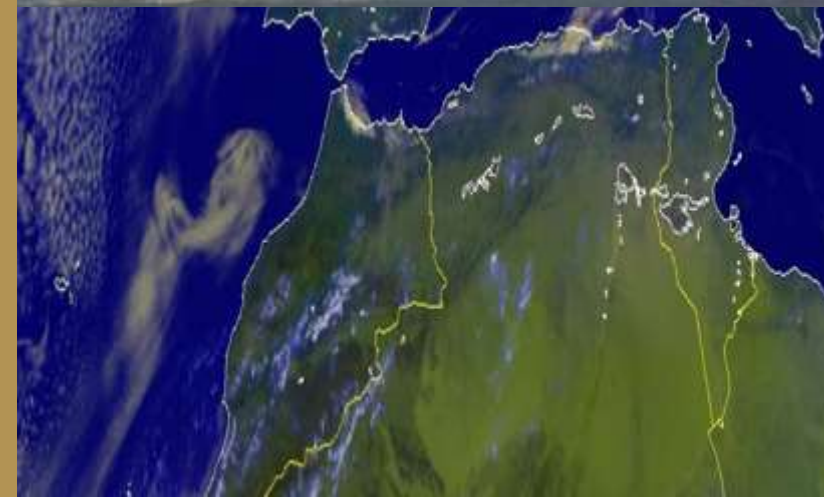
- LOA: 179
- LBP: 170
- Breadth: 29
- Draft: 18
- Depth: 12
- Deadweight: 32,570
- Net Tonnage: 8,385
- Gross Tonnage: 21,345
- Number of Cargo Tanks: 5
- Total Cubic Capacity: 36,730
- Cargo Pumps: Fr. Deepwell, 10 x 500 and 2 (Slops) x 200 CBM/HR
- Hull Type: Double Hull
- Propeller: Controllable Pitch Propeller
- Speed: 13 kn





# 36,730 CBM TANKER VESSEL

Code: CVIT94151





**36,830 CBM**  
**TANKER VESSEL**

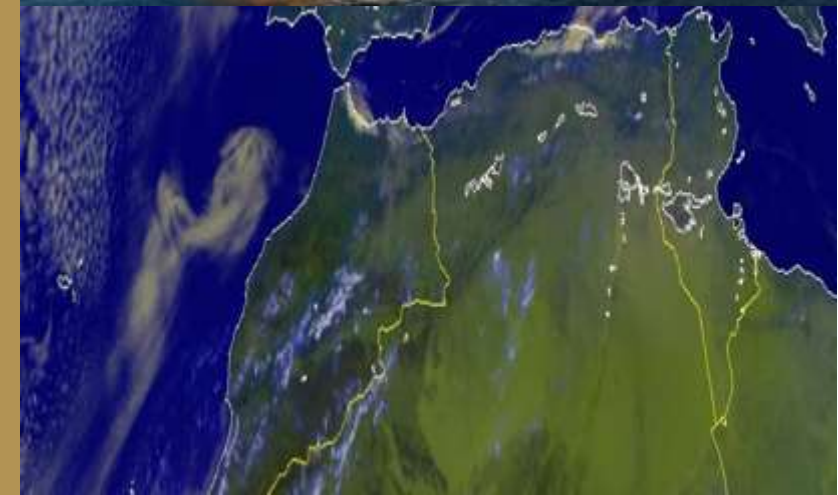
**CPP: FOR CHARTER**

# 36,830 CBM TANKER VESSEL

Code: CVIT94152

## TECHNICAL DETAILS:

- YEAR OF BUILD: 2000
- TOTAL CUBIC CAPACITY (98%): 36,830 CBM
- CARGO TYPE: CPP
- RECENT ACTIVITIES ON:
- RECENT LOCATION: Gulf Area
- OPEN TERMS:

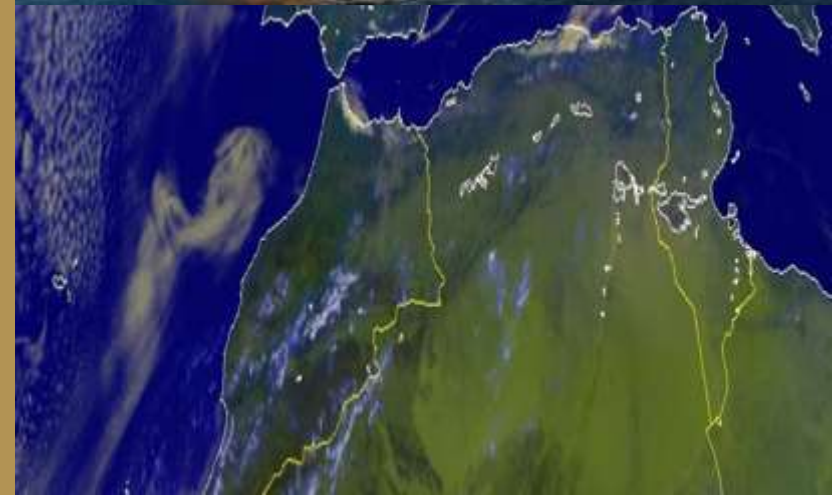


# 36,830 CBM TANKER VESSEL

Code: CVIT94152

## MORE TECHNICAL SPECIFICATIONS:

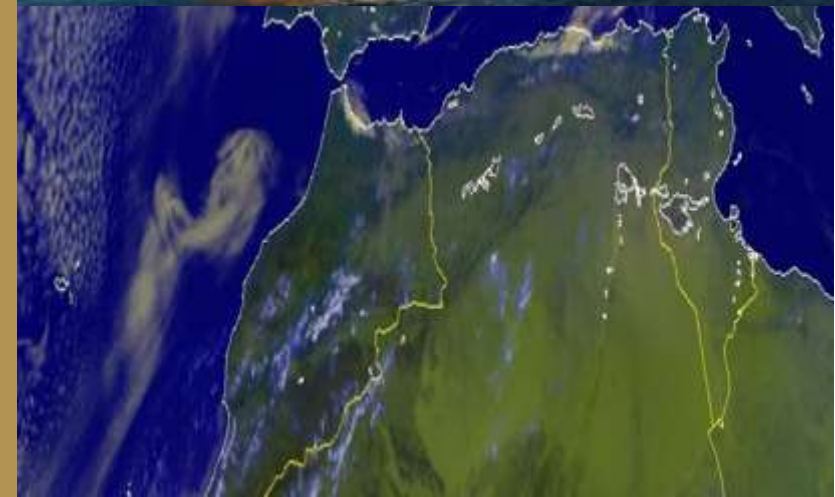
- LOA: 179
- LBP: 170
- Breadth: 29
- Draft: 12
- Depth: 17
- Deadweight: 32,210
- Net Tonnage: 8,380
- Gross Tonnage: 21,340
- Total Cubic Capacity: 36,830
- Cargo Pumps: FRAMO, 10 x 500 and 2 x 200 CBM/HR + Screw Type, 2 x 180 CBM/HR
- Hull Type: Double Hull
- Propeller: Controllable Pitch
- Speed: 13 kn





# 36,830 CBM TANKER VESSEL

Code: CVIT94152



*DPP VESSELS*

*Dirty Petroleum  
Products*



**3,570 CBM**  
**TANKER VESSEL**

**DPP: FOR CHARTER**

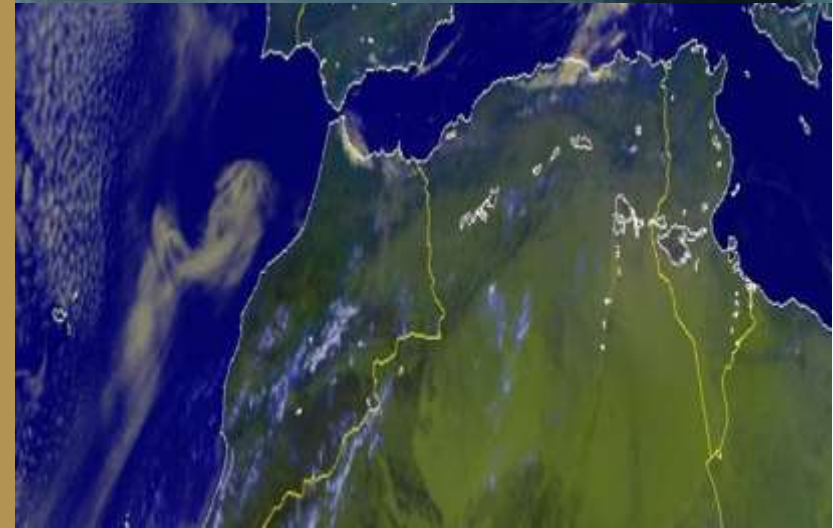


## 3,570 CBM TANKER VESSEL

Code: CVIT96144

### TECHNICAL DETAILS:

- YEAR OF BUILD: 2009
- NUMBER OF CARGO TANKS / TOTAL CUBIC CAPACITY (98%): 10 / 3,570 CBM
- CARGO TYPE: DPP
- RECENT ACTIVITIES ON:
- RECENT LOCATION: Mozambique Channel
- OPEN TERMS:

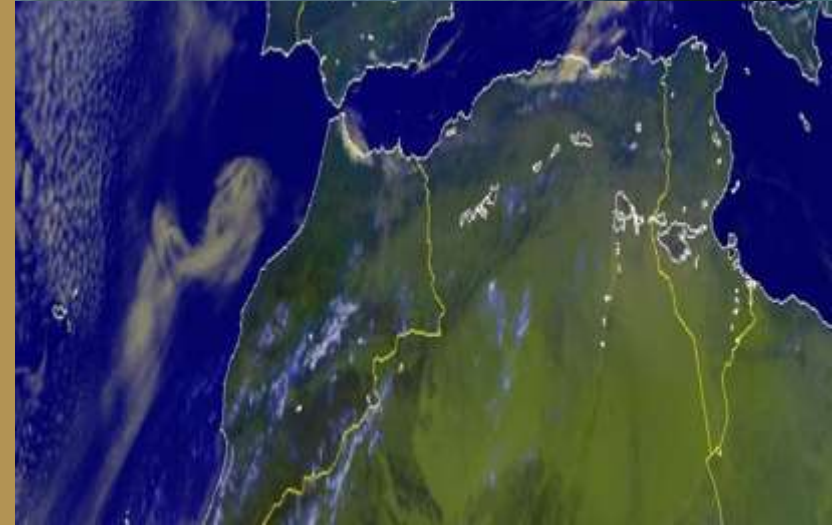


## 3,570 CBM TANKER VESSEL

Code: CVIT96144

### MORE TECHNICAL SPECIFICATIONS:

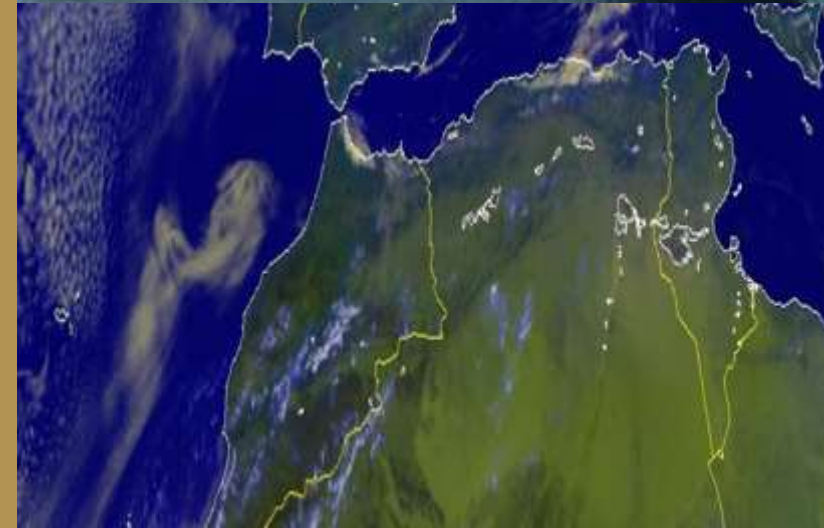
- LOA: 85
- LBP: 81
- Breadth: 14
- Draft: 7
- Depth: 9
- Deadweight: 3,595
- Net Tonnage: 965
- Gross Tonnage: 2,140
- Number of Cargo Tanks: 10
- Total Cubic Capacity: 3,570
- Cargo Pump: Centrifugal Type, 2 x 150 CBM/HR
- Hull Type: Double Hull
- Propeller: 1 Controllable Pitch
- Speed: 11.4 kn





# 3,570 CBM TANKER VESSEL

Code: CVIT96144





**6,900 CBM  
TANKER VESSEL**

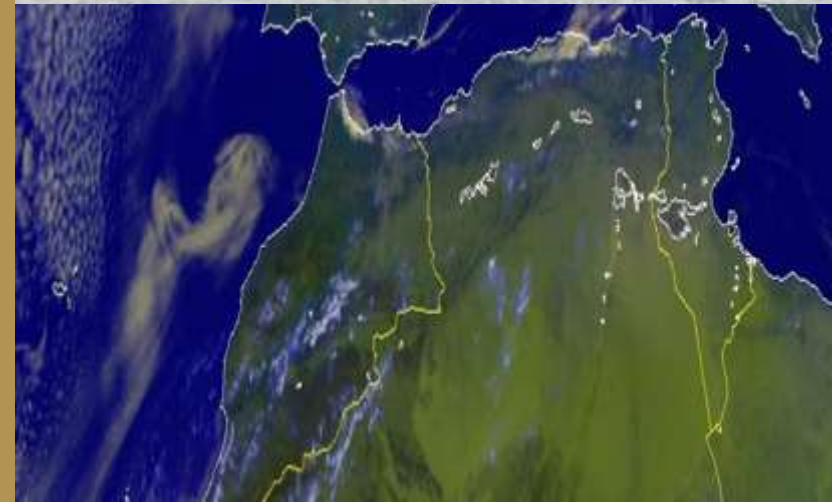
**DPP: FOR CHARTER**

# 6,900 CBM TANKER VESSEL

Code: CVIT96142

## TECHNICAL DETAILS:

- YEAR OF BUILD: 2009
- NUMBER OF CARGO TANKS AND TOTAL CUBIC CAPACITY (98%): 10/6,900 CBM
- CARGO TYPE: DPP
- RECENT ACTIVITIES ON: FUEL OIL CS380
- RECENT LOCATION: Gulf Area
- OPEN TERMS: Voyage

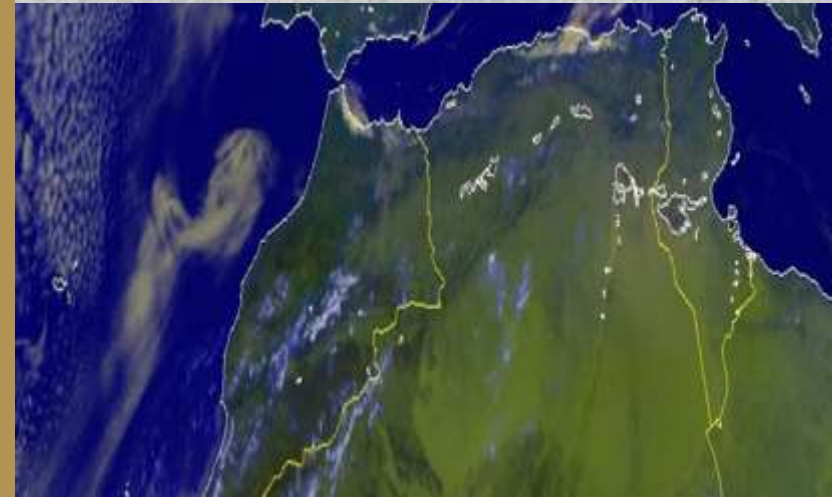


# 6,900 CBM TANKER VESSEL

Code: CVIT96142

## MORE TECHNICAL SPECIFICATIONS:

- LOA: 104
- LBP: 97
- Breadth: 19
- Draft: 8
- Depth: 10
- Deadweight: 6,270
- Net Tonnage: 1,964
- Gross Tonnage: 4,575
- Number of Cargo Tanks: 10
- Total Cubic Capacity: 6,900
- Ballast Pump: Centrifugal, 2 x 200 CBM/HR
- Hull Type: Double Hull
- Propeller: 1 Fixed Pitch
- Speed: 13.8 kn





# 6,900 CBM TANKER VESSEL

Code: CVIT96142



**14,080 CBM  
TANKER VESSEL**

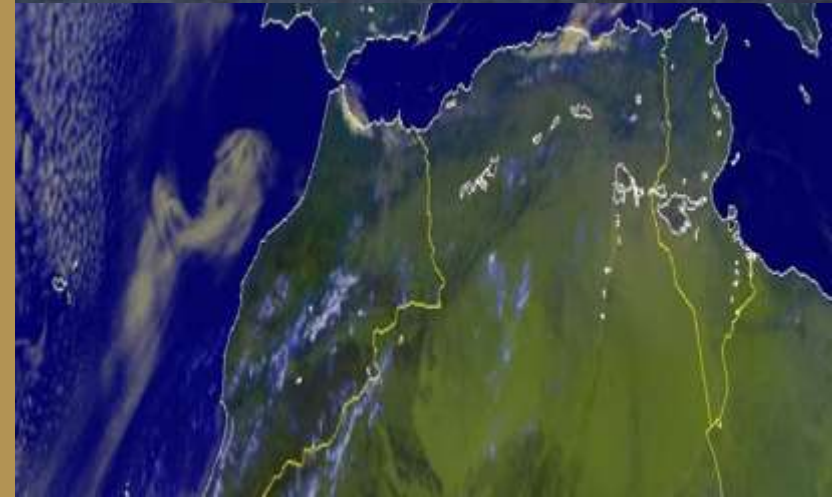
**DPP: FOR CHARTER**

# 14,080 CBM TANKER VESSEL

Code: CVIT96153

## TECHNICAL DETAILS:

- **YEAR OF BUILD:** 2007
- **NUMBER OF CARGO TANKS / TOTAL CUBIC CAPACITY (98%):** 12 / 14,080 CBM
- **CARGO TYPE:** Black Products
- **RECENT ACTIVITIES ON:** HSFO
- **RECENT LOCATION:** South Coast of Sri Lanka
- **OPEN TERMS:** TC + Voyage



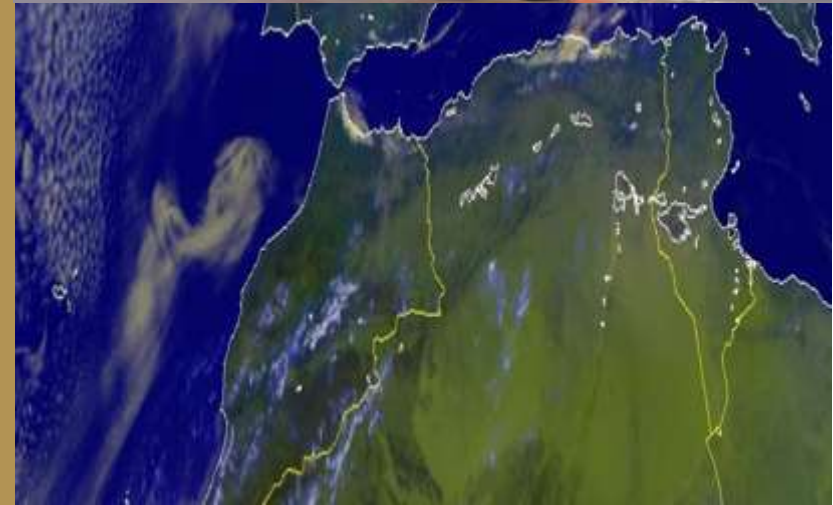


# 14,080 CBM TANKER VESSEL

Code: CVIT96153

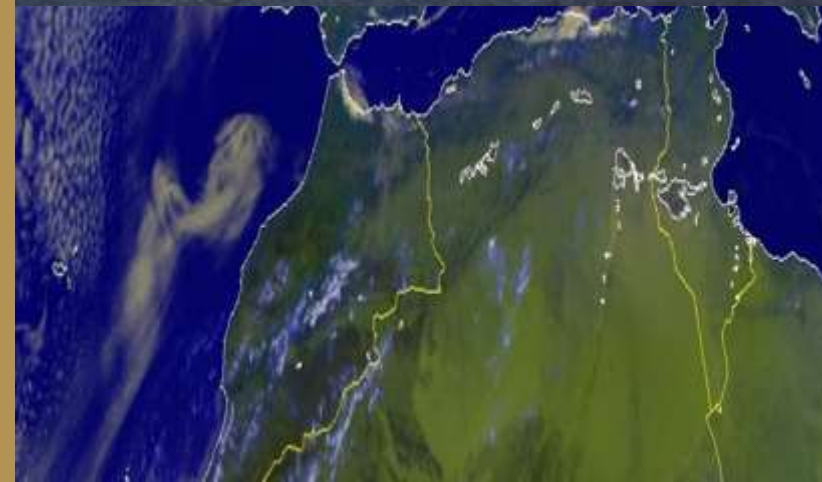
## MORE TECHNICAL SPECIFICATIONS:

- LOA: 130
- LBP: 122
- Breadth: 22
- Draft: 10
- Depth: 13
- Deadweight: 13,000
- Net Tonnage: 4,115
- Gross Tonnage: 8,535
- Number of Cargo Tanks: 12
- Total Cubic Capacity: 14,080
- Cargo Pump: FRAMO, 12 x 300 and 2 x 100 CBM/HR
- Hull Type: Double Hull
- Propeller: 1 Fixed Pitch
- Speed: 13.2 kn



# 14,080 CBM TANKER VESSEL

Code: CVIT96153



**18,500 CBM  
TANKER VESSEL**

**DPP: FOR CHARTER**

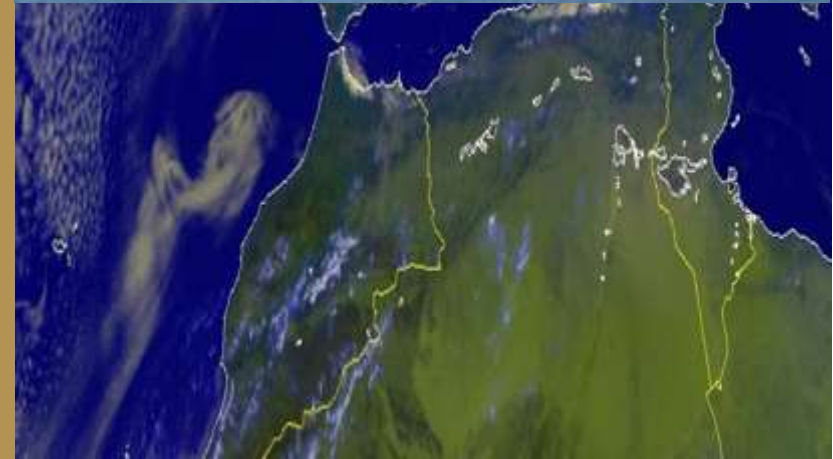


# 18,500 CBM TANKER VESSEL

Code: CVIT96140

## TECHNICAL DETAILS:

- YEAR OF BUILD: 2016
- NUMBER OF CARGO TANKS / TOTAL CUBIC CAPACITY (98%): 12 / 18,500 CBM
- CARGO TYPE: DPP
- RECENT ACTIVITIES ON:
- RECENT LOCATION: Gulf of Aden
- OPEN TERMS:

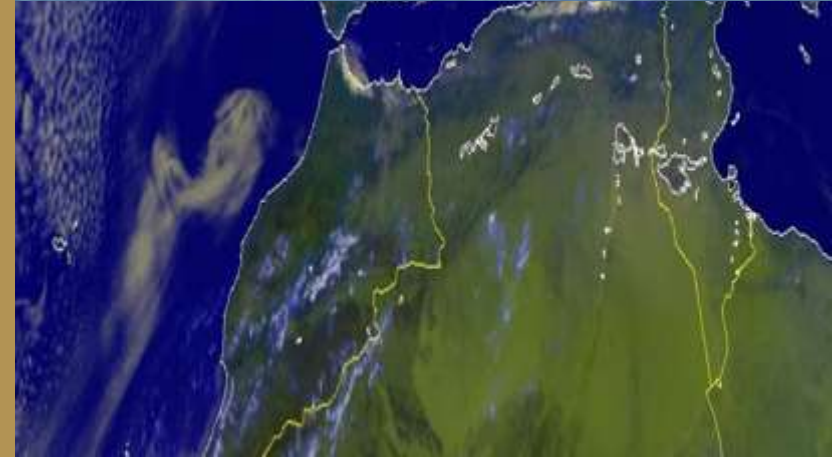


# 18,500 CBM TANKER VESSEL

Code: CVIT96140

## MORE TECHNICAL SPECIFICATIONS:

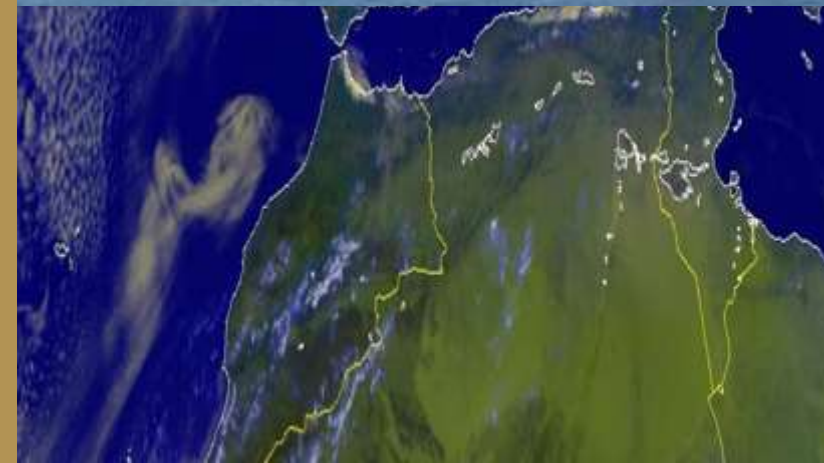
- LOA: 146
- LBP: 136
- Breadth: 25
- Draft: 10
- Depth: 13
- Deadweight: 17,475
- Net Tonnage: 5,140
- Gross Tonnage: 10,980
- Number of Cargo Tanks: 12
- Total Cubic Capacity: 18,500
- Cargo Pump: FRAMO, 8 x 300 CBM/HR)
- Hull Type: Double Hull
- Propeller: Fixed Pitch Propeller
- Speed: 13.8 kn





# 18,500 CBM TANKER VESSEL

Code: CVIT96140





**34,080 CBM**  
**TANKER VESSEL**

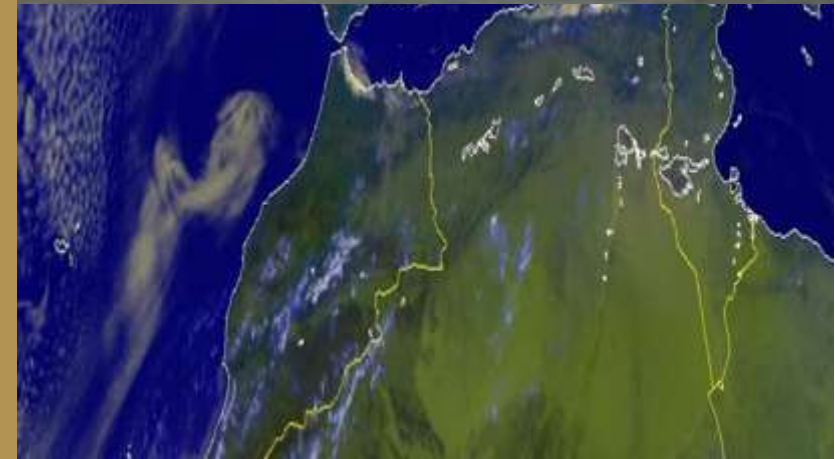
**DPP: FOR CHARTER**

# 34,080 CBM TANKER VESSEL

Code: CVIT96162

## TECHNICAL DETAILS:

- YEAR OF BUILD: 2000
- TOTAL CUBIC CAPACITY (98%): 34,080 CBM
- CARGO TYPE: DPP
- RECENT ACTIVITIES ON:
- RECENT LOCATION: Gulf Area
- OPEN TERMS:

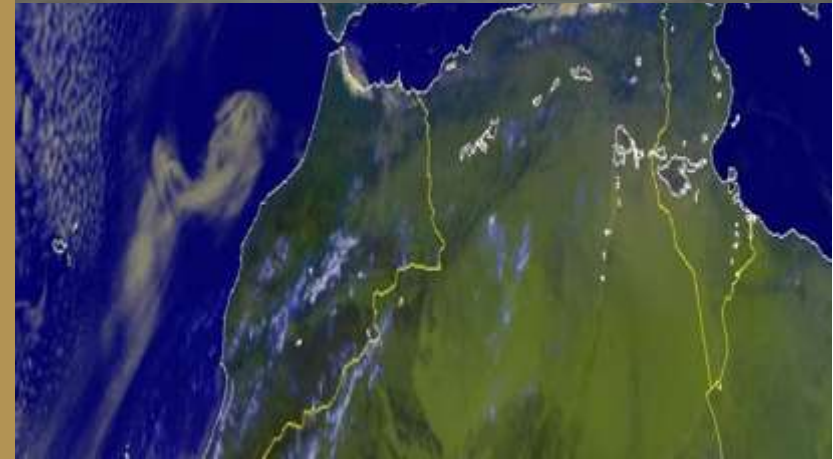


# 34,080 CBM TANKER VESSEL

Code: CVIT96162

## MORE TECHNICAL SPECIFICATIONS:

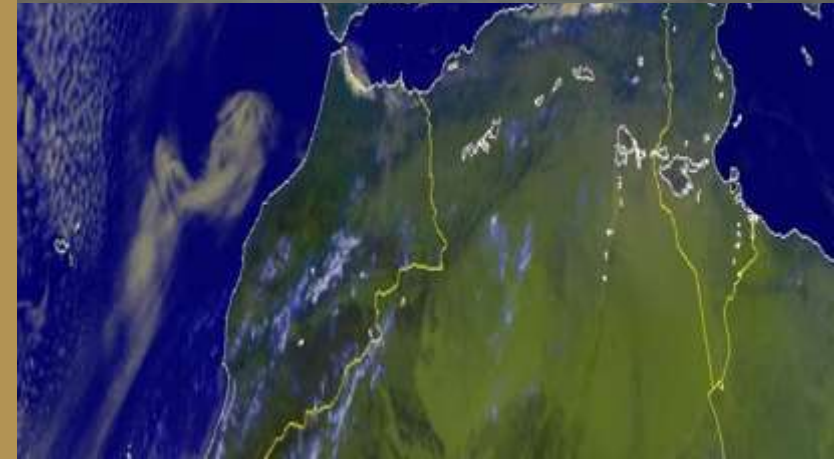
- LOA: 173
- LBP: 164
- Breadth: 29
- Draft: 14
- Depth: 19
- Deadweight: 34,980
- Net Tonnage: 9,435
- Gross Tonnage: 22,175
- Total Cubic Capacity: 34,080
- Hull Type: Double Hull
- Propeller: 1 Fixed Pitch Propeller
- Speed: 14.2 kn





# 34,080 CBM TANKER VESSEL

Code: CVIT96162



# CONTACT US

CVIT GLOBAL SHIPMENT FZCO

Website: [www.cvitglobal.com](http://www.cvitglobal.com)

Email: [info@cvitglobal.com](mailto:info@cvitglobal.com)

Phone: +971 4 361 51 20

## Locations:

2514, Churchill Business Tower  
Business Bay, Dubai, UAE

