

*BULK CARRIER*  
*& GENERAL*  
*CARGO VESSELS*

*CVIT GLOBAL SHIPMENT FZCO*



**3,480 DWT  
GENERAL CARGO  
FOR CHARTER**

# 3,480 DWT GENERAL CARGO

Code: CVIT99145

## TECHNICAL DETAILS:

- YEAR OF BUILD: 1998
- GRAIN CAPACITY: 4,160
- RECENT LOCATION: Gulf Area
- OPEN TERMS: TC + Voyage



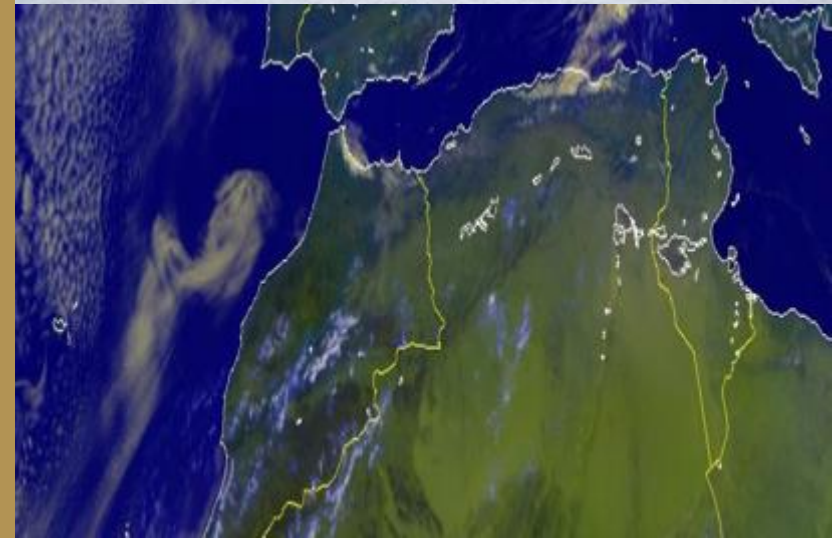


# 3,480 DWT GENERAL CARGO

Code: CVIT99145

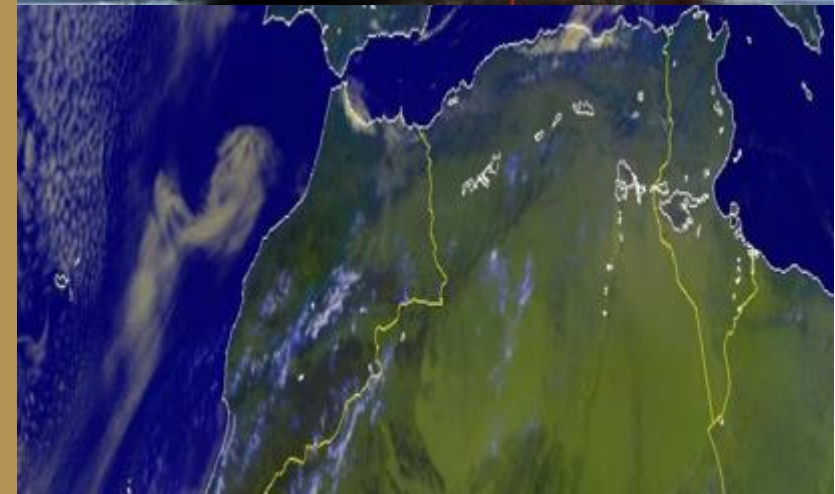
## MORE TECHNICAL SPECIFICATIONS:

- LOA: 94
- LBP: 86
- Breadth: 17
- Draft: 6
- Depth: 8
- Deadweight: 3,480
- Net Tonnage: 1,220
- Gross Tonnage: 2,585
- Grain Capacity: 4,160
- Crane: Gearless
- Hull Type: Single Hull
- Propeller: 1 Controllable Pitch
- Speed: 14.5 kn



# 3,480 DWT GENERAL CARGO

Code: CVIT99145



**7,570 DWT**  
**GENERAL CARGO VESSEL**  
**FOR CHARTER**



# 7,570 DWT GENERAL CARGO

Code: CVIT99166

## DETAILS:

- YEAR OF BUILD: 2000
- BALE CAPACITY / GRAIN CAPACITY: 9,529 / 9,957
- RECENT LOCATIONS: Aegean Sea
- OPEN TERMS:

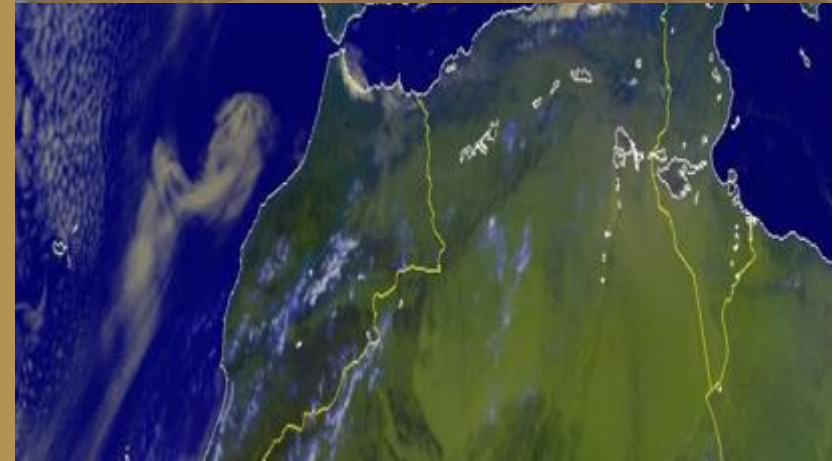


# 7,570 DWT GENERAL CARGO

Code: CVIT99166

## OTHER SPECIFICATIONS:

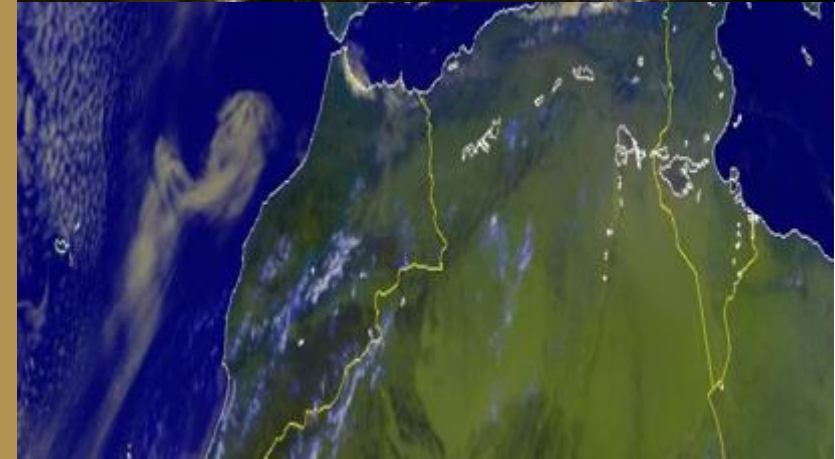
- LOA: 100
- LBP: 94.5
- Beam: 20
- Draft: 7.5
- Depth: 10
- Deadweight: 7570
- Gross Tonnage: 4763
- Net Tonnage: 2855
- Bale Capacity: 9529
- Grain Capacity: 9957
- Crane: D-3-30
- Gear SWL: 30
- Holds: 2
- Hatches: 2
- Hatch Size: 35 x 10





# 7,570 DWT GENERAL CARGO

Code: CVIT99166



**8,100 DWT**  
**GENERAL CARGO VESSEL**  
**FOR CHARTER**

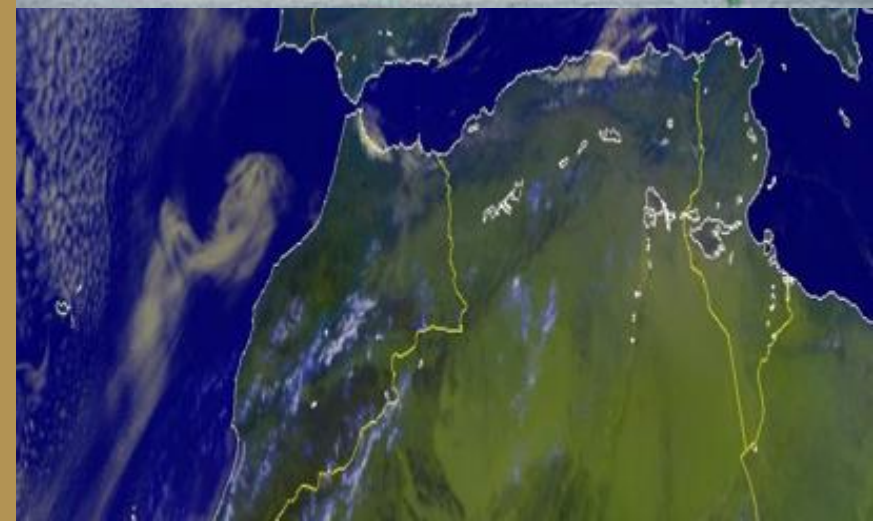


# 8,100 DWT GENERAL CARGO

Code: CVIT99149

## DETAILS:

- YEAR OF BUILD: 2002
- GRAIN CAPACITY: 11,818
- RECENT LOCATIONS: Gulf Area
- OPEN TERMS:



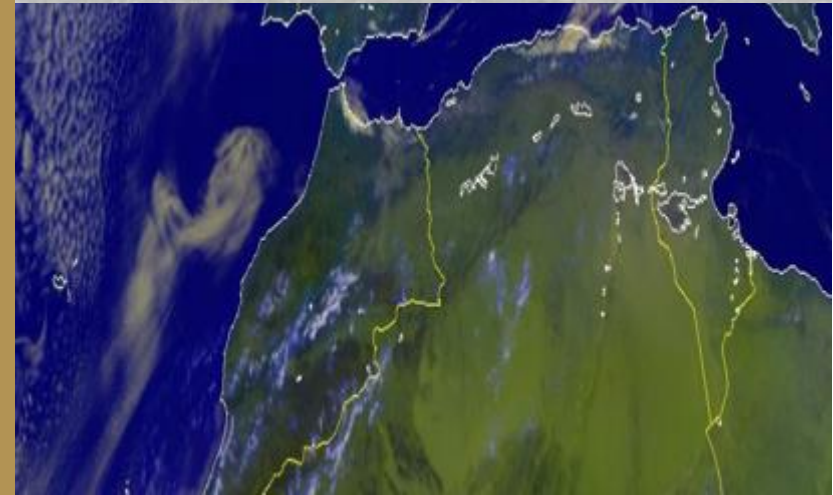


## 8,100 DWT GENERAL CARGO

Code: CVIT99149

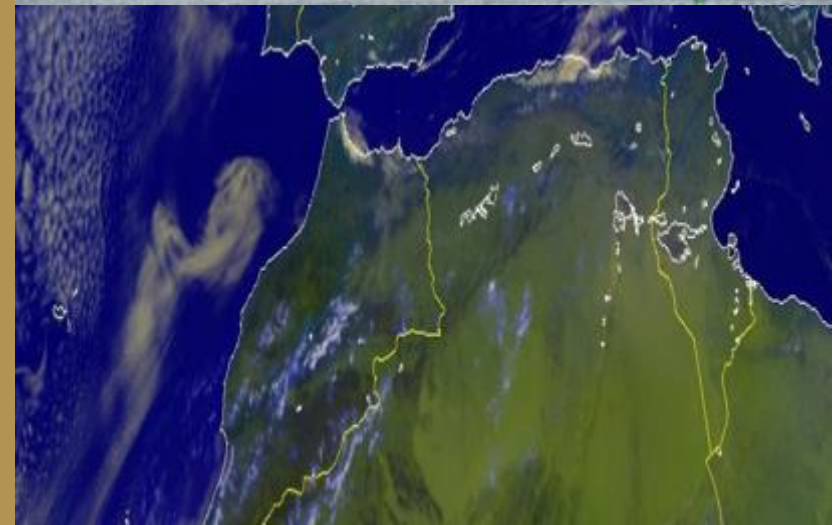
### OTHER SPECIFICATIONS:

- LOA: 120
- LBP: 113
- Breadth: 21
- Draft: 8
- Depth: 12
- Deadweight: 8100
- Gross Tonnage: 7250
- Net Tonnage: 2984
- Grain Capacity: 11,818
- TEU: 469
- Crane: D-2-25
- Hull Type: Double Bottom
- Engine Power: 5400 kw
- Propeller: 1 Controllable Pitch Propeller
- Fuel Type: Marine Diesel



# 8,100 DWT GENERAL CARGO

Code: CVIT99149



**13,320 DWT  
GENERAL CARGO  
FOR CHARTER**

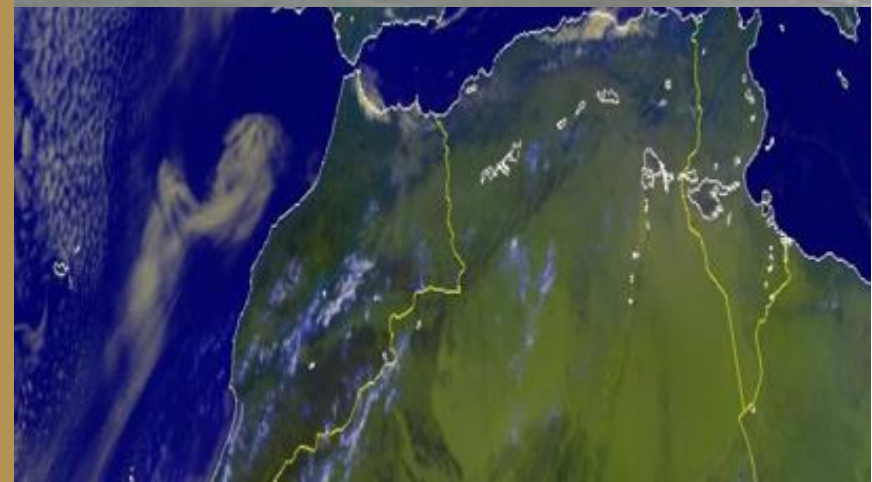
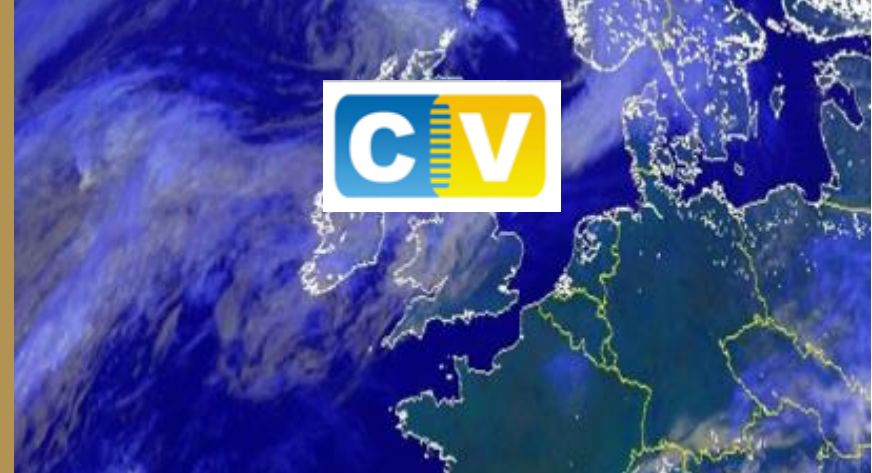


# 13,320 DWT GENERAL CARGO

Code: CVIT99155

## DETAILS:

- YEAR OF BUILD: 2005
- BALE CAPACITY / GRAIN CAPACITY: 17,700 / 18,500
- RECENT LOCATIONS: Oman Sea
- OPEN TERMS:

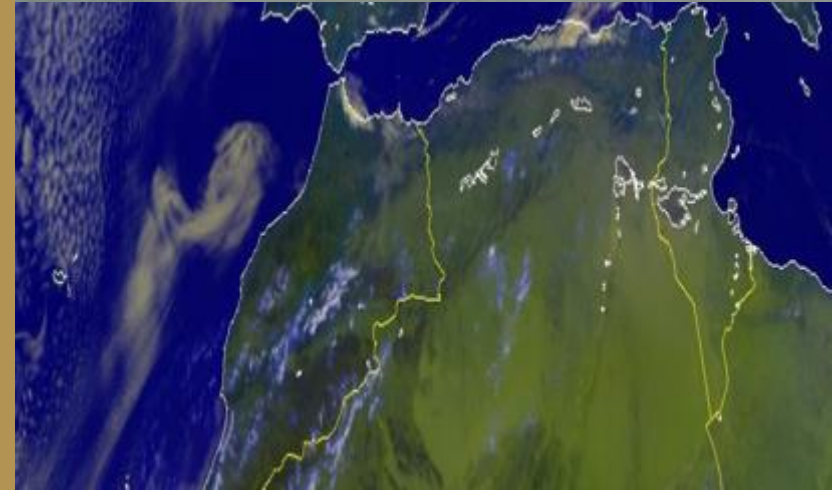


# 13,320 DWT GENERAL CARGO

Code: CVIT99155

## OTHER SPECIFICATIONS:

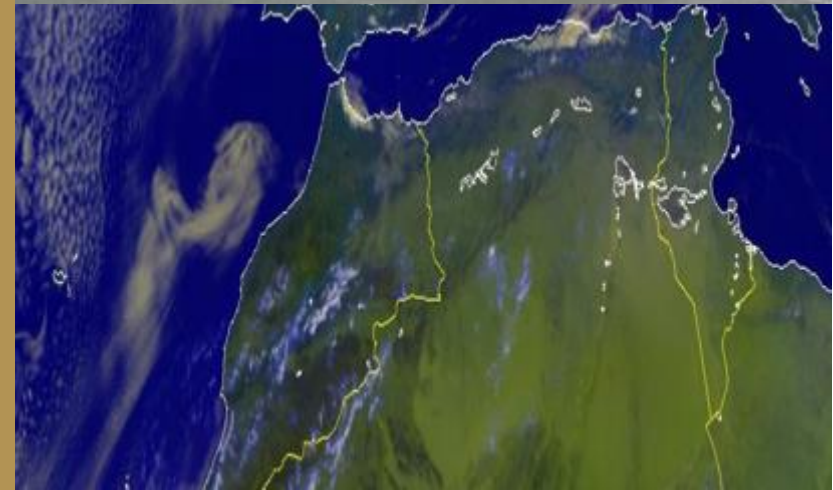
- LOA: 138
- LBP: 129
- Breadth: 22
- Draft: 9
- Depth: 12
- Deadweight: 13,320
- Net Tonnage: 5,260
- Gross Tonnage: 8,200
- Bale Capacity: 17,700
- Grain Capacity: 18,500
- Crane: D-4-20
- Hull Type: Single Hull
- Propeller: 1 Fixed Pitch
- Speed: 13.8 kn





# 13,320 DWT GENERAL CARGO

Code: CVIT99155





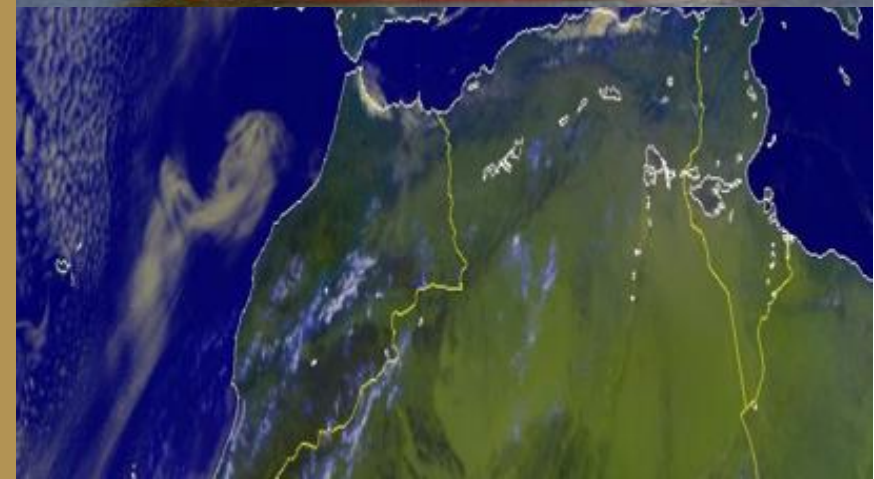
**13,350 DWT  
GENERAL CARGO  
FOR SALE**

# 13,350 DWT GENERAL CARGO

Code: CVIT99150

## DETAILS:

- YEAR OF BUILD: 1999
- BALE CAPACITY / GRAIN CAPACITY: 15,410 / 15,620
- RECENT LOCATIONS: Balearic Sea
- OPEN TERMS:



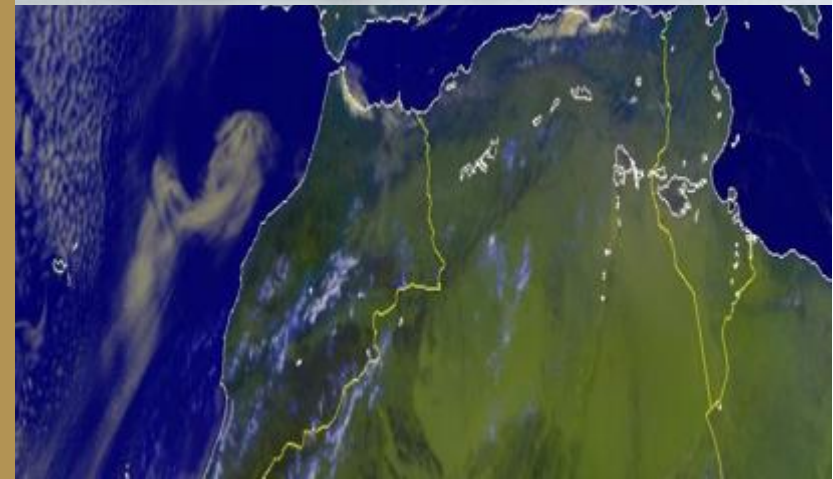


# 13,350 DWT GENERAL CARGO

Code: CVIT99150

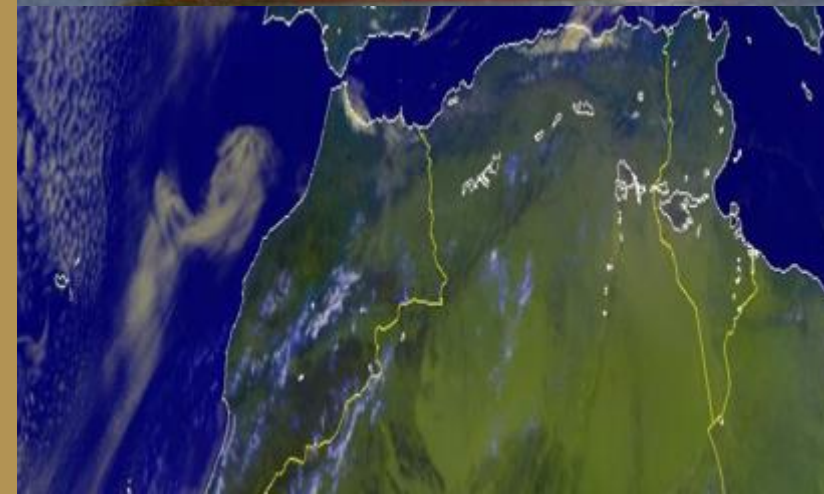
## OTHER SPECIFICATIONS:

- LOA: 130
- LBP: 121
- Breadth: 23
- Draft: 10
- Depth: 13
- Deadweight: 13,350
- Net Tonnage: 4,605
- Gross Tonnage: 7,910
- Bale Capacity: 15,410
- Grain Capacity: 15,620
- Crane: C-2-30
- Hull Type: Double Bottom
- Propeller: 1 Solid Propeller, AFT
- Speed: 12



# 13,350 DWT GENERAL CARGO

Code: CVIT99150





**22,060 DWT  
BULK CARRIER  
FOR CHARTER**

# 22,060 DWT BULK CARRIER

Code: CVIT99153

## DETAILS:

- YEAR OF BUILD: 1994
- BALE CAPACITY / GRAIN CAPACITY: 28,250 / 29,225
- RECENT LOCATIONS: Black Sea
- OPEN TERMS:



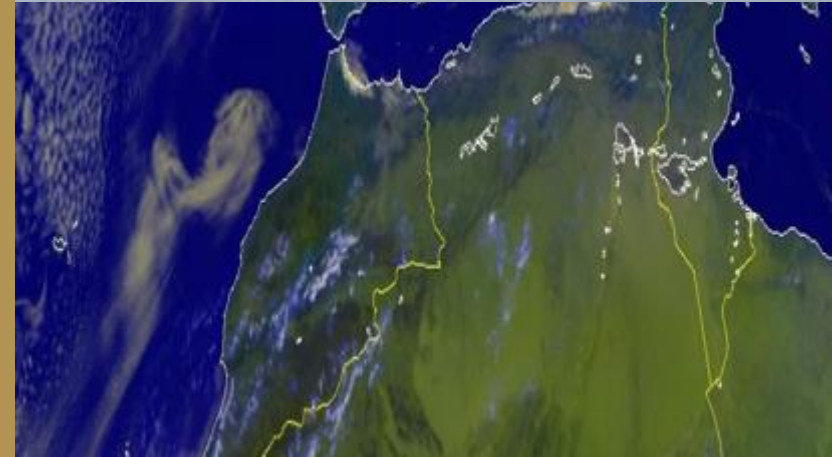


# 22,060 DWT BULK CARRIER

Code: CVIT99153

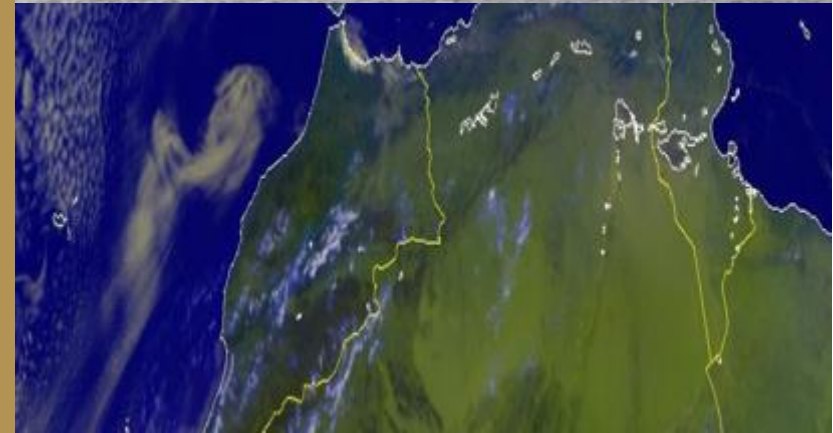
## OTHER SPECIFICATIONS:

- LOA: 155
- LBP: 146
- Breadth: 24
- Draft: 8
- Depth: 11
- Deadweight: 22,060
- Gross Tonnage: 13,700
- Net Tonnage: 7,770
- Displacement: 27,240
- Bale Capacity: 28,250
- Grain Capacity: 29,225
- Crane: C-4-30
- Hull Type: Single Hull
- Propeller: 1 Fixed Pitch
- Speed: 13 kn



# 22,060 DWT BULK CARRIER

Code: CVIT99153





**28,600 DWT  
BULK CARRIER  
FOR CHARTER**

# 28,600 DWT BULK CARRIER

Code: CVIT99162

## DETAILS:

- YEAR OF BUILD: 2010
- BALE CAPACITY / GRAIN CAPACITY: 35,740 / 37,315
- RECENT LOCATIONS: Gulf Area / Oman Sea
- OPEN TERMS:



# 28,600 DWT BULK CARRIER

Code: CVIT99162

## OTHER SPECIFICATIONS:

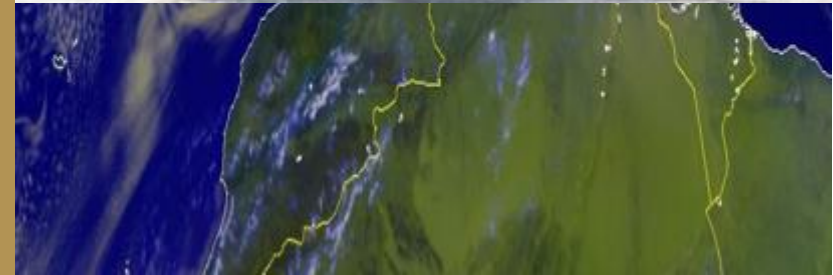
- LOA: 170
- LBP: 161
- Breadth: 28
- Draft: 10
- Depth: 14
- Deadweight: 28,600
- Gross Tonnage: 17,017
- Bale Capacity: 35,740
- Grain Capacity: 37,315
- Crane: C-4-30
- Hull Type: Single Hull
- Engine Power: 5,850 kw
- Propeller: 1 Fixed Pitch
- Fuel Type: Marine Diesel
- Speed: 16 kn





# 28,600 DWT BULK CARRIER

Code: CVIT99162



**32,320 DWT  
BULK CARRIER  
FOR CHARTER**

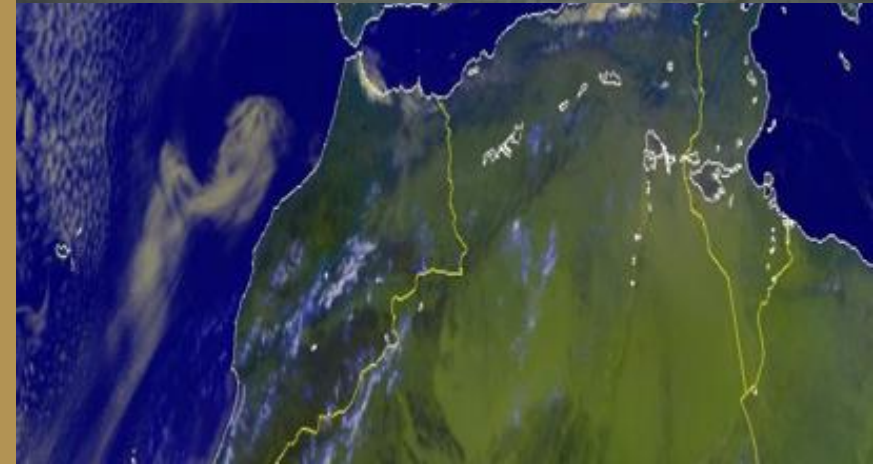


# 32,320 DWT BULK CARRIER

Code: CVIT99137

## DETAILS:

- YEAR OF BUILD: 2004
- BALE CAPACITY / GRAIN CAPACITY: 41,150 / 42,150
- RECENT LOCATIONS: Black Sea
- OPEN TERMS:

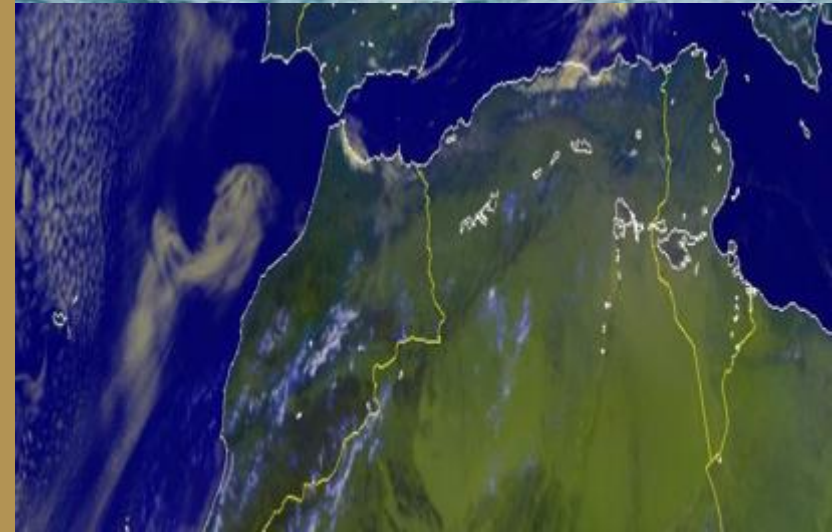


# 32,320 DWT BULK CARRIER

Code: CVIT99137

## OTHER SPECIFICATIONS:

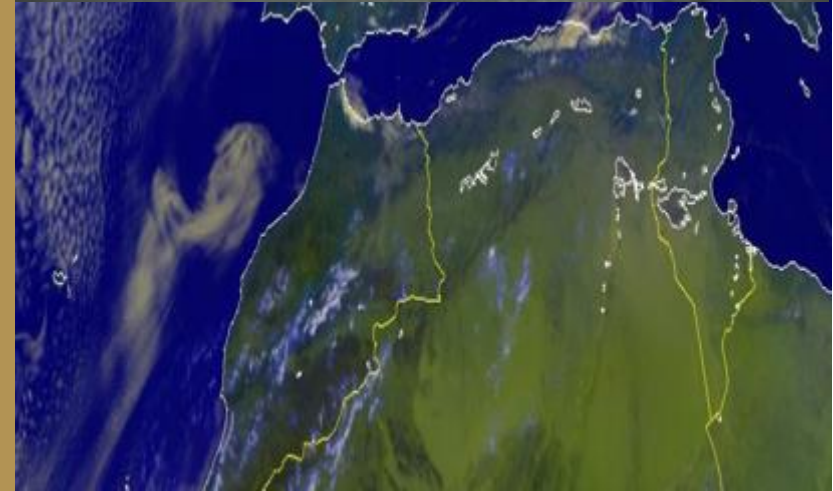
- LOA: 174
- LBP: 166
- Breadth: 31
- Draft: 10
- Depth: 15
- Deadweight: 32,320
- Gross Tonnage: 20,280
- Net Tonnage: 10,220
- Bale Capacity: 41,150
- Grain Capacity: 42,150
- Crane: C-4-30
- Hull Type: Single Hull
- Propeller: 1 Fixed Pitch
- Speed: 14.5 kn





# 32,320 DWT BULK CARRIER

Code: CVIT99137



**35,270 DWT  
BULK CARRIER  
FOR CHARTER**

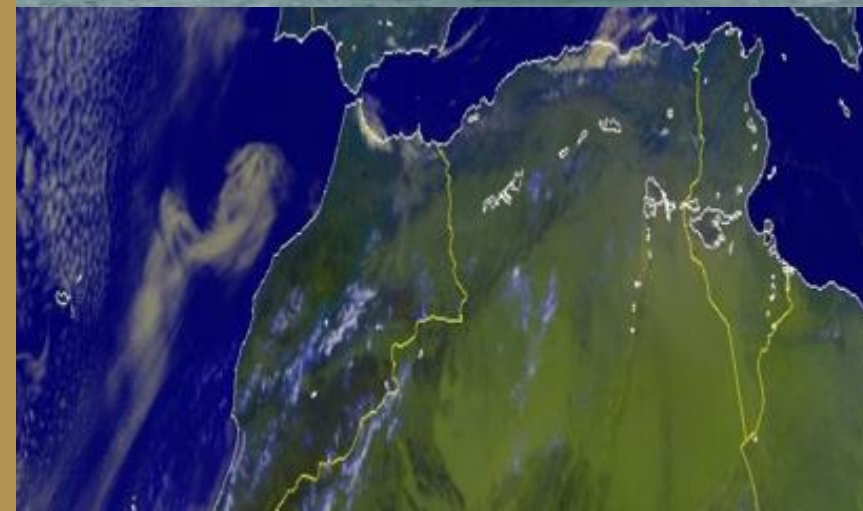


# 35,270 DWT BULK CARRIER

Code: CVIT99163

## DETAILS:

- YEAR OF BUILD: 2013
- GRAIN CAPACITY: 44,290
- RECENT LOCATIONS: Western Europe
- OPEN TERMS:

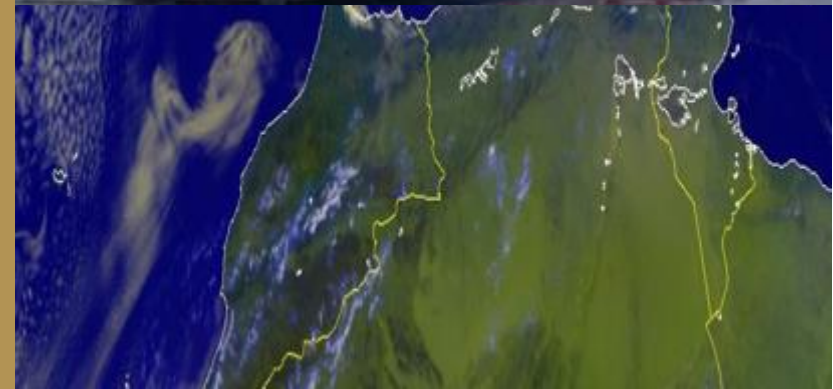


# 35,270 DWT BULK CARRIER

Code: CVIT99163

## OTHER SPECIFICATIONS:

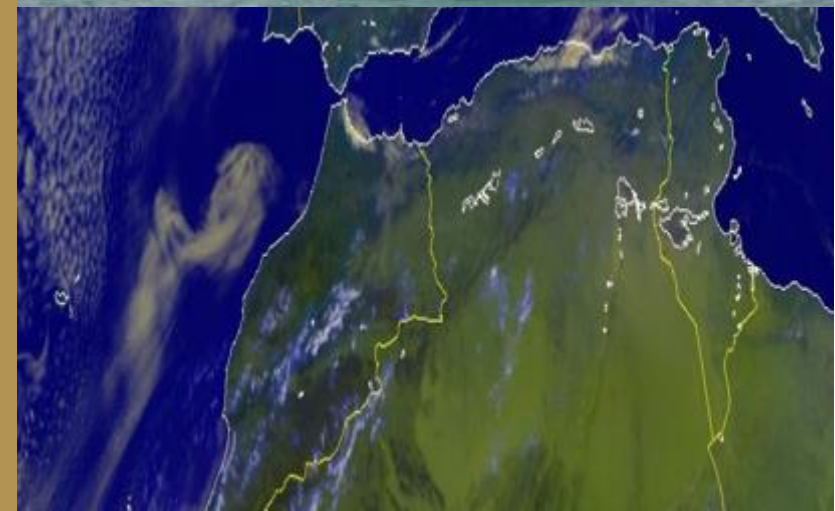
- LOA: 180
- LBP: 173
- Breadth: 30
- Draft: 11
- Depth: 15
- Deadweight: 35,270
- Gross Tonnage: 23,230
- Net Tonnage: 11,760
- Grain Capacity: 44,290
- Crane: C-4-30,5
- Hull Type: Single Hull
- Engine Power: 5,920 kw
- Fuel Type: Marine Diesel
- Speed: 13 kn





# 35,270 DWT BULK CARRIER

Code: CVIT99163





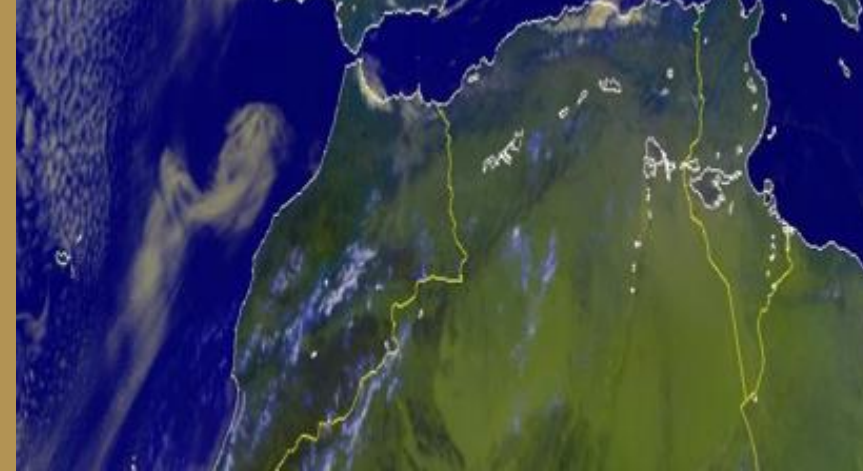
**37,400 DWT  
BULK CARRIER  
FOR CHARTER**

# 37,400 DWT BULK CARRIER

Code: CVIT99165

## DETAILS:

- YEAR OF BUILD: 2003
- BALE CAPACITY / GRAIN CAPACITY: 42,345 / 42,775
- RECENT LOCATIONS: Gulf of Izmit
- OPEN TERMS:

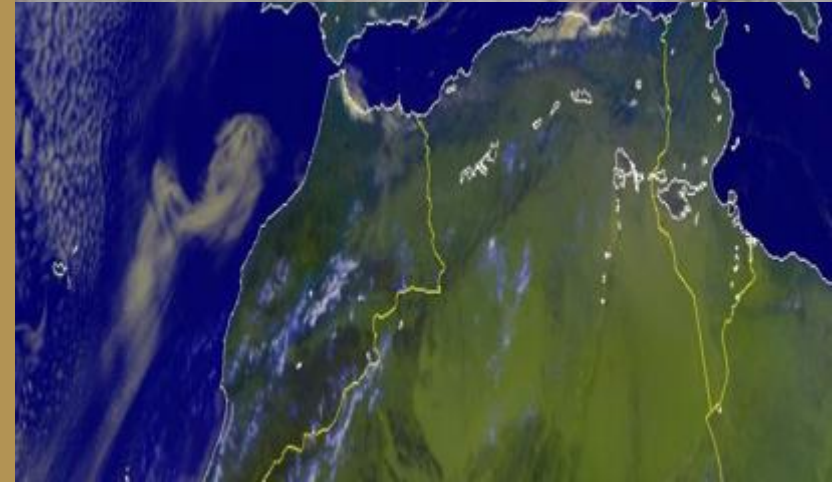


# 37,400 DWT BULK CARRIER

Code: CVIT99165

## OTHER SPECIFICATIONS:

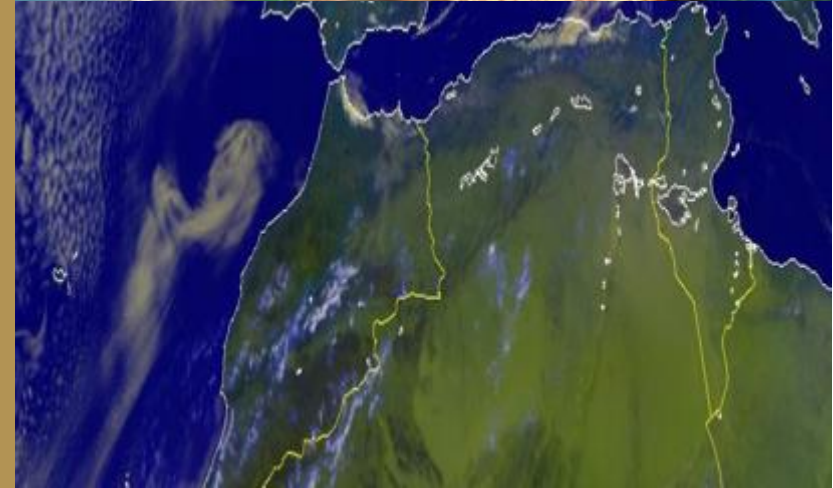
- LOA: 201
- LBP: 193
- Breadth: 24
- Draft: 12
- Depth: 16
- Deadweight: 37,400
- Gross Tonnage: 22,740
- Net Tonnage: 12,070
- Bale Capacity: 42,345
- Grain Capacity: 42,775
- Crane: C-4-25
- Hull Type: Double Bottom
- Engine Power: 7,860 kw
- Fuel Type: Marine Diesel
- Speed: 13.5 kn





# 37,400 DWT BULK CARRIER

Code: CVIT99165



**38,706 DWT  
BULK CARRIER  
FOR CHARTER**

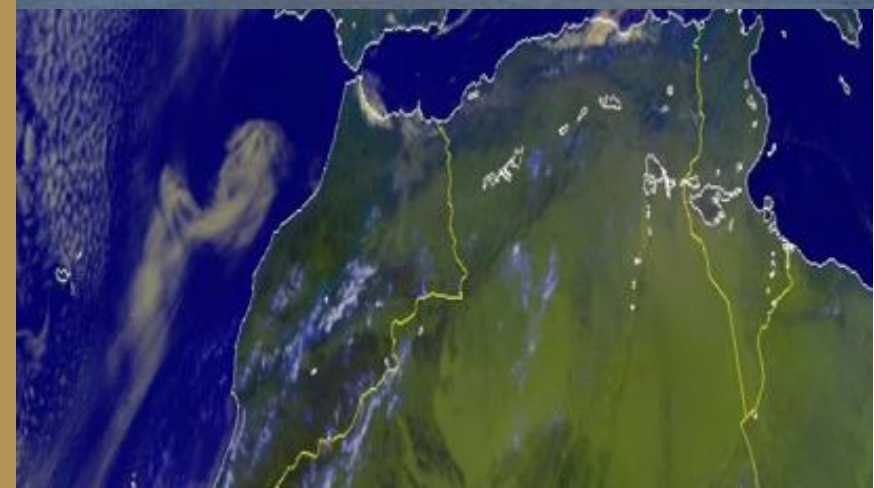


# 38,706 DWT BULK CARRIER

Code: CVIT99168

## DETAILS:

- YEAR OF BUILD: 2016
- GRAIN CAPACITY: 48,400
- RECENT LOCATIONS: North Sea
- OPEN TERMS:



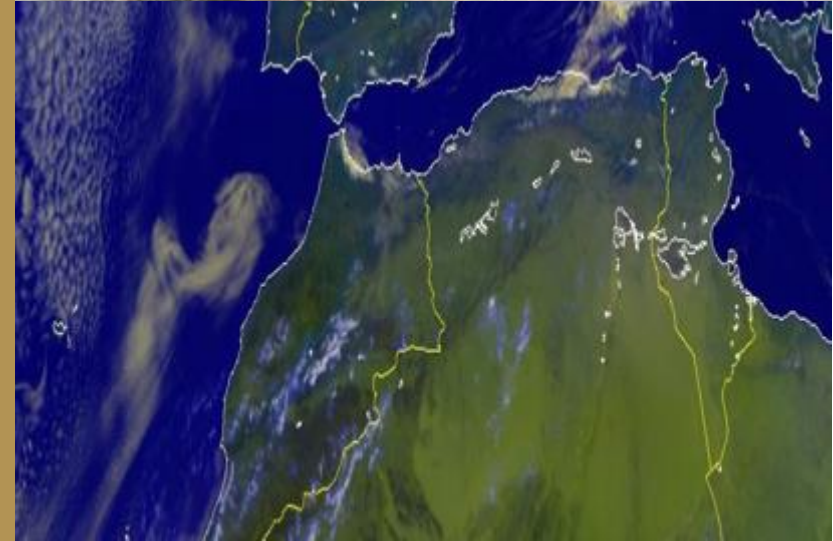


# 38,706 DWT BULK CARRIER

Code: CVIT99168

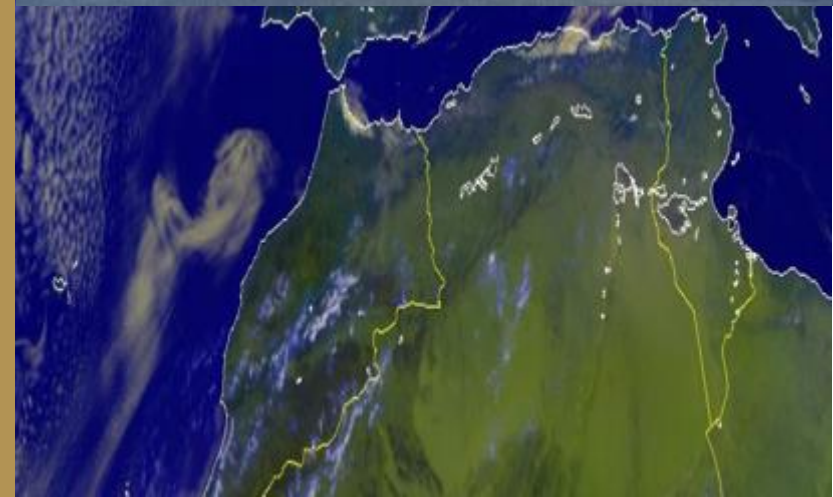
## OTHER SPECIFICATIONS:

- LOA: 182
- LBP: 179
- Breadth: 34
- Draft: 12
- Depth: 17
- Deadweight: 38,706
- Gross Tonnage: 25,500
- Net Tonnage: 13,000
- Grain Capacity: 48,400
- Crane: C-4-30
- Hull Type: Double Hull
- Propeller: 1 Fixed Pitch
- Speed: 12.7 kn



# 38,706 DWT BULK CARRIER

Code: CVIT99168



**47,300 DWT  
BULK CARRIER  
FOR CHARTER**

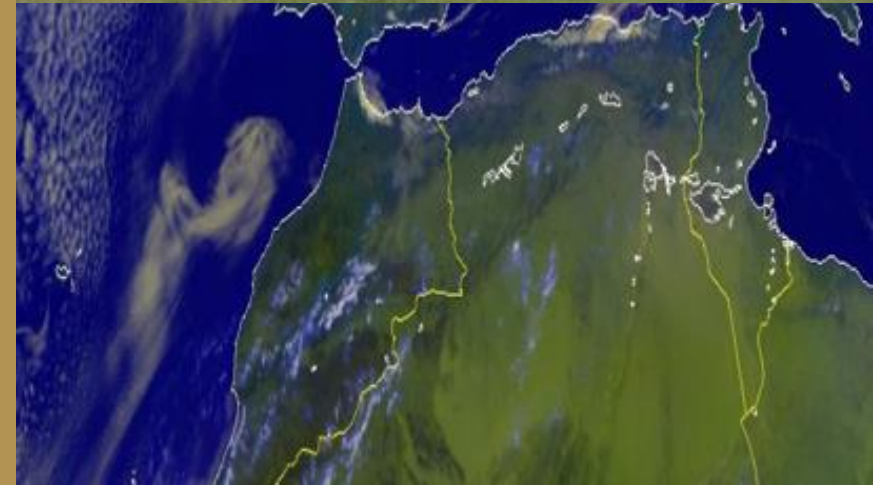


# 47,300 DWT BULK CARRIER

Code: CVIT99135

## DETAILS:

- YEAR OF BUILD: 1999
- BALE CAPACITY / GRAIN CAPACITY: 58,200 / 59,300
- RECENT LOCATIONS: Gulf Area
- OPEN TERMS:

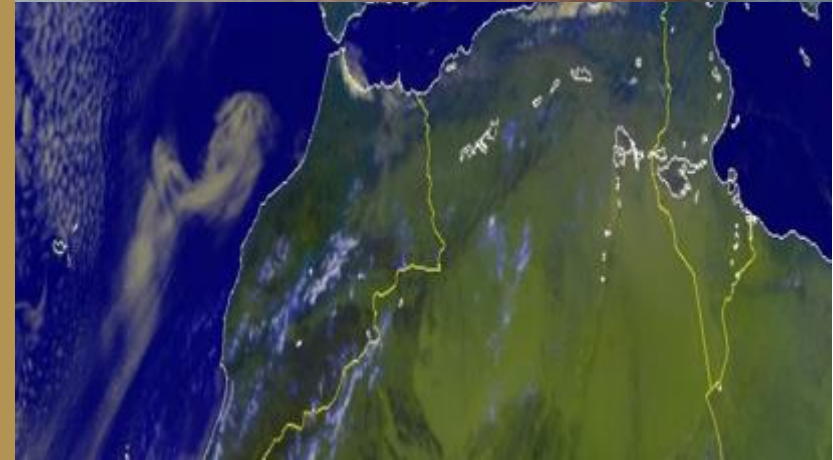


# 47,300 DWT BULK CARRIER

Code: CVIT99135

## OTHER SPECIFICATIONS:

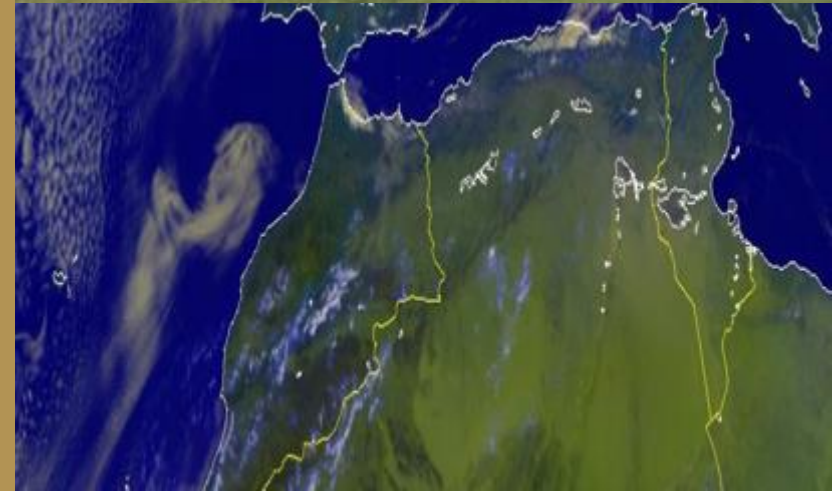
- LOA: 188
- LBP: 180
- Breadth: 33
- Draft: 13
- Depth: 18
- Deadweight: 47,300
- Gross Tonnage: 25,900
- Net Tonnage: 16,100
- Bale Capacity: 58,200
- Grain Capacity: 59,300
- Crane: D-2-35 / C-2-35
- Hull Type: Double Hull
- Propeller: 1 Fixed Pitch
- Speed: 13





# 47,300 DWT BULK CARRIER

Code: CVIT99135





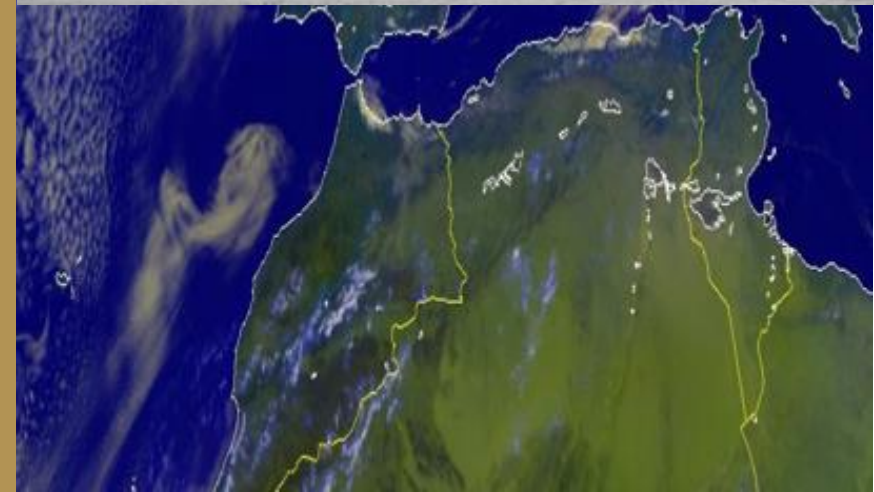
**63,550 DWT  
BULK CARRIER  
FOR CHARTER**

# 63,550 DWT BULK CARRIER

Code: CVIT99170

## DETAILS:

- YEAR OF BUILD: 2018
- BALE CAPACITY / GRAIN CAPACITY: 73,675 / 78,485
- RECENT LOCATIONS: Singapore
- OPEN TERMS:



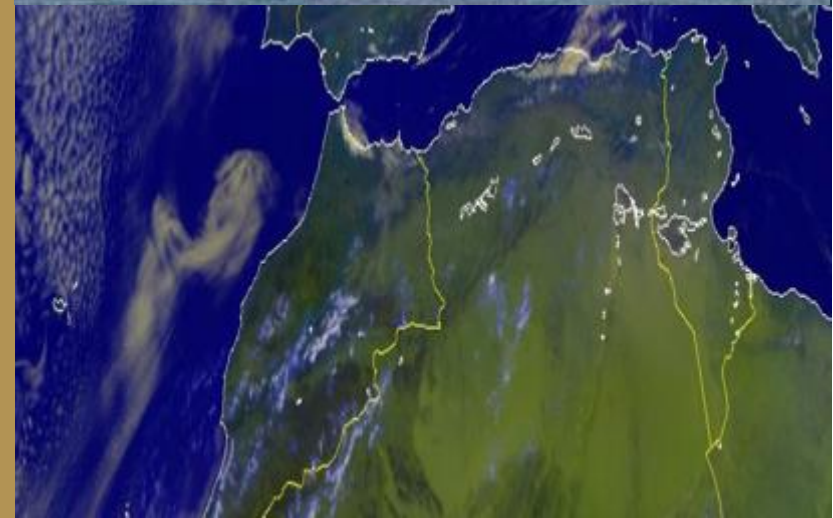


# 63,550 DWT BULK CARRIER

Code: CVIT99170

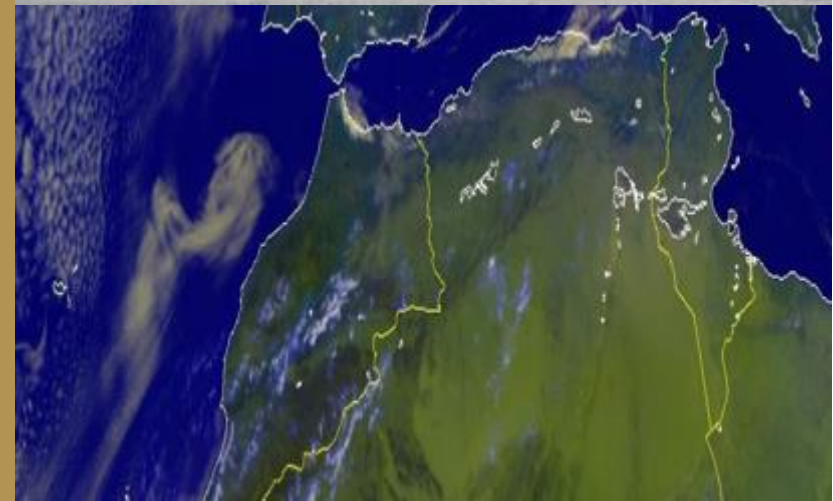
## OTHER SPECIFICATIONS:

- LOA: 201
- LBP: 196
- Breadth: 33
- Draft: 14
- Depth: 19
- Deadweight: 63,550
- Gross Tonnage: 36,300
- Net Tonnage: 21,570
- Bale Capacity: 73,675
- Grain Capacity: 78,485
- Crane: C-4-30
- Hatches: 5
- Holds: 5
- Propeller: Fixed Pitch
- Speed: 14 kn



# 63,550 DWT BULK CARRIER

Code: CVIT99170



**72,880 DWT  
BULK CARRIER  
FOR CHARTER**

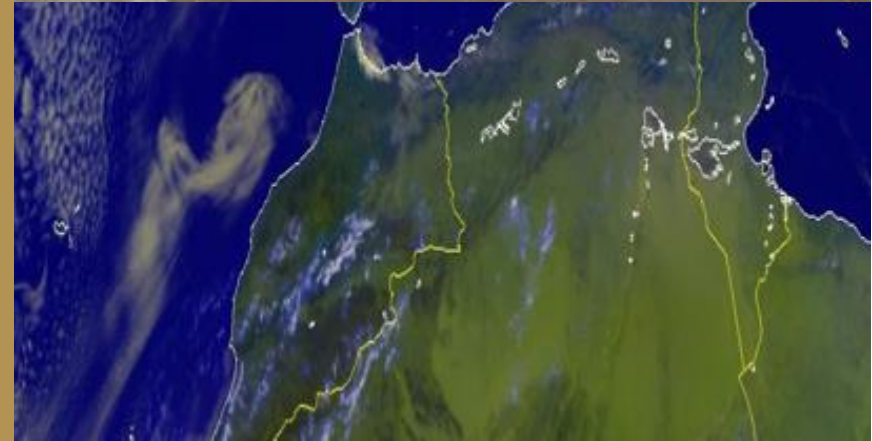


# 72,880 DWT BULK CARRIER

Code: CVIT99171

## DETAILS:

- YEAR OF BUILD: 1997
- GRAIN CAPACITY: 87,000
- RECENT LOCATIONS: South Africa
- OPEN TERMS:

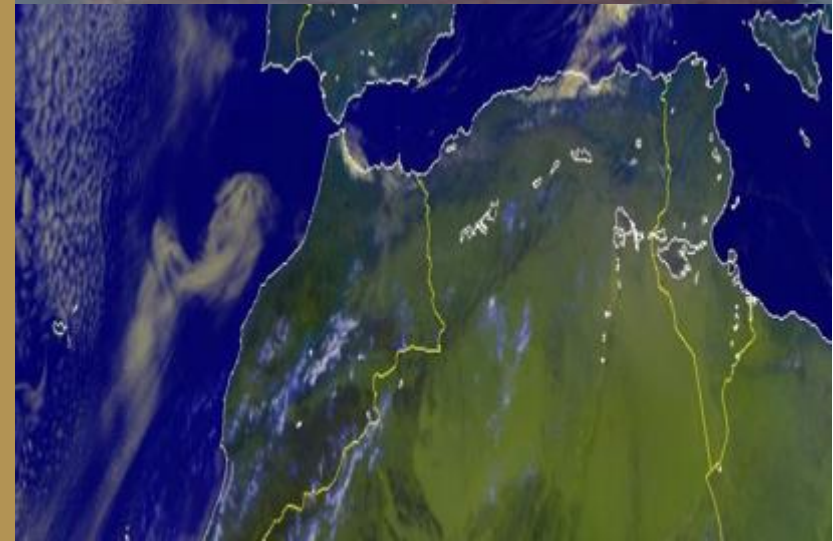


# 72,880 DWT BULK CARRIER

Code: CVIT99171

## OTHER SPECIFICATIONS:

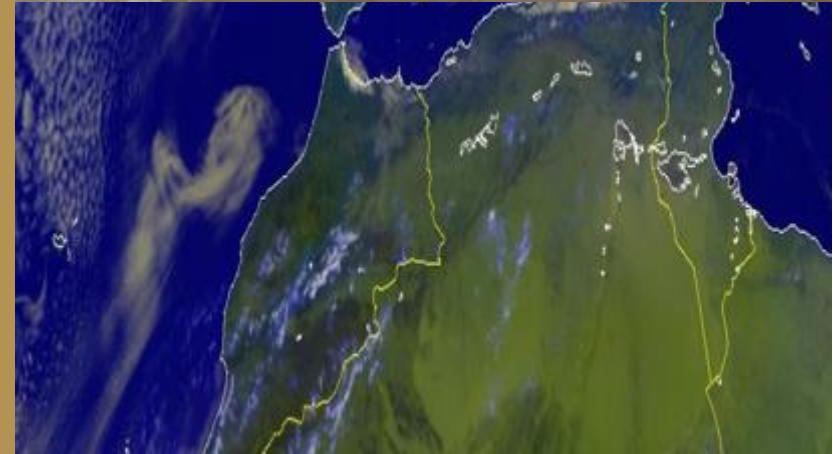
- LOA: 228
- LBP: 220
- Breadth: 35
- Draft: 16
- Depth: 22
- Deadweight: 72,880
- Gross Tonnage: 38,800
- Net Tonnage: 24,120
- Grain Capacity: 87,000
- Crane: Gearless
- Hull Type: Double Hull
- Propeller: 1 Screw Propeller
- Speed: 13.5 kn





# 72,880 DWT BULK CARRIER

Code: CVIT99171





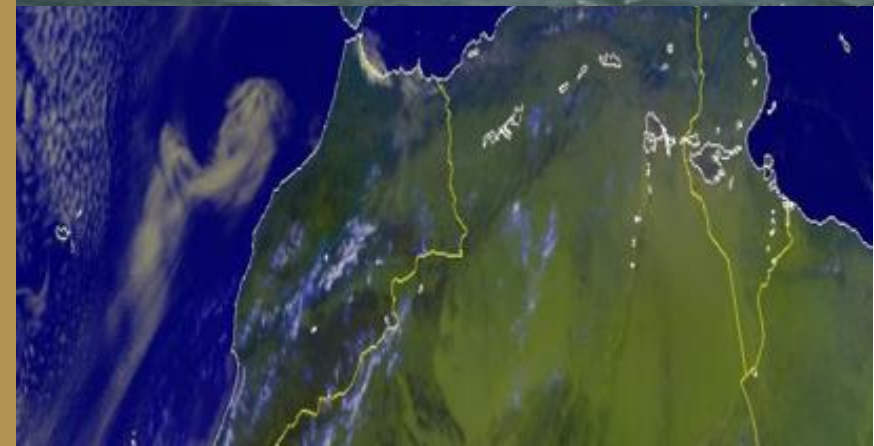
**80,590 DWT  
BULK CARRIER  
FOR CHARTER**

# 80,590 DWT BULK CARRIER

Code: CVIT99173

## DETAILS:

- YEAR OF BUILD: 2012
- GRAIN CAPACITY: 96,000
- RECENT LOCATIONS: Red Sea
- OPEN TERMS:



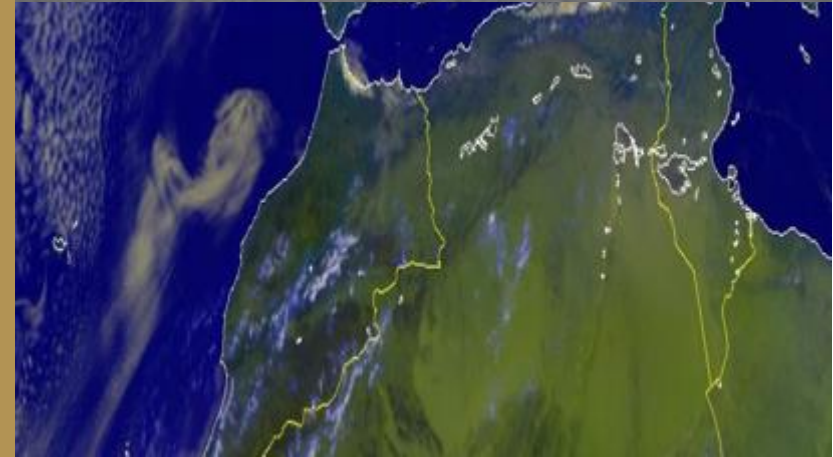


# 80,590 DWT BULK CARRIER

Code: CVIT99173

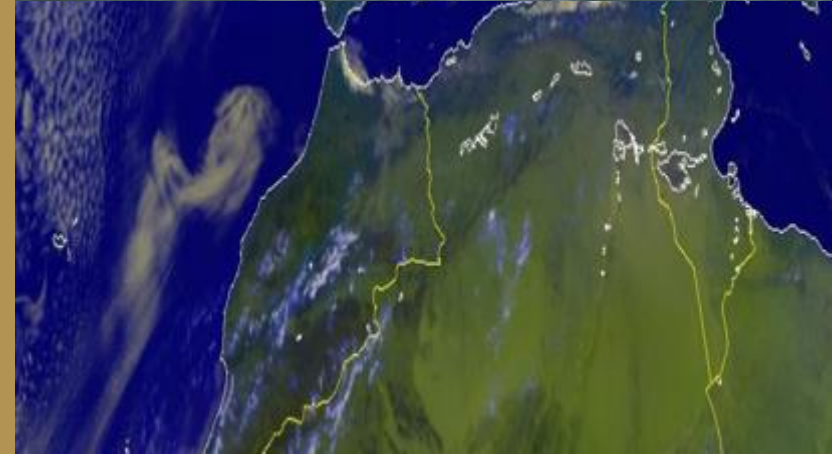
## OTHER SPECIFICATIONS:

- LOA: 227
- LBP: 223
- Breadth: 34
- Draft: 16
- Depth: 21
- Deadweight: 80,590
- Gross Tonnage: 42,550
- Net Tonnage: 26,550
- Grain Capacity: 96,000
- Crane: Gearless
- Hull Type: Single Hull
- Propeller: 1 Fixed Pitch
- Speed: 13 kn



# 80,590 DWT BULK CARRIER

Code: CVIT99173



**81,700 DWT  
BULK CARRIER  
FOR CHARTER**

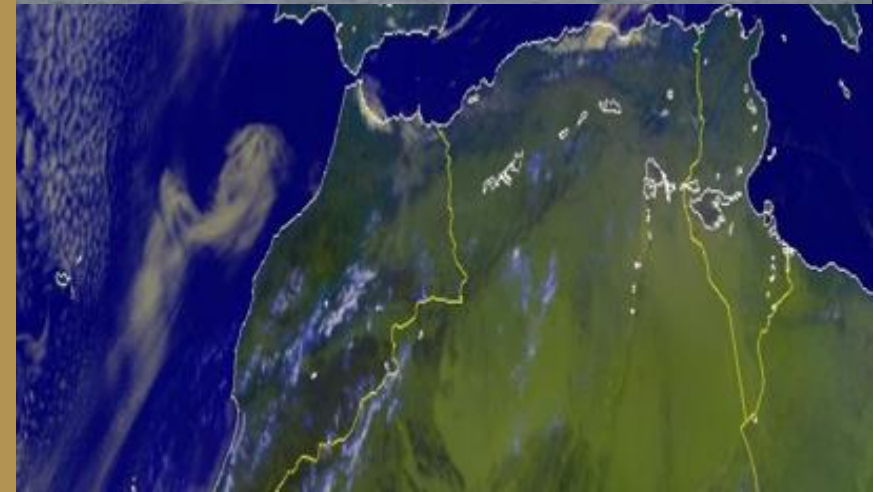


# 81,700 DWT BULK CARRIER

Code: CVIT99178

## DETAILS:

- YEAR OF BUILD: 2019
- BALE CAPACITY / GRAIN CAPACITY: 90,760 / 97,100
- RECENT LOCATIONS: Oman Sea
- OPEN TERMS:

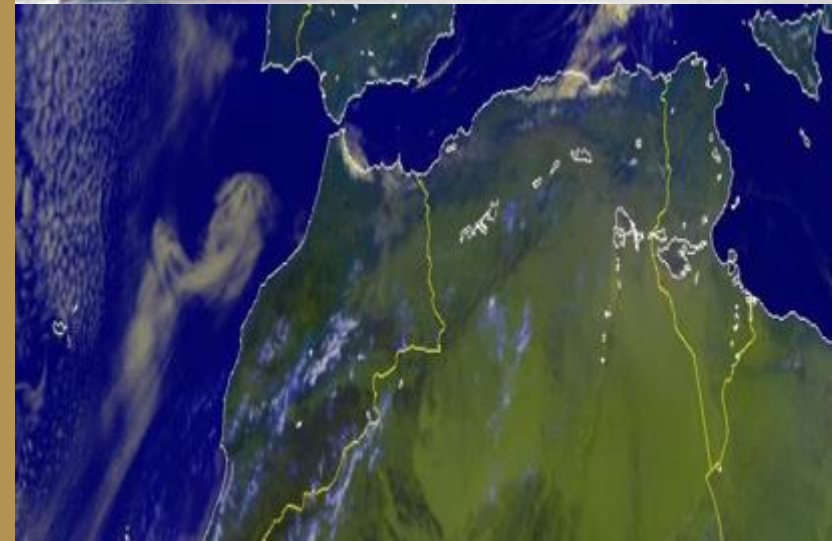


# 81,700 DWT BULK CARRIER

Code: CVIT99178

## OTHER SPECIFICATIONS:

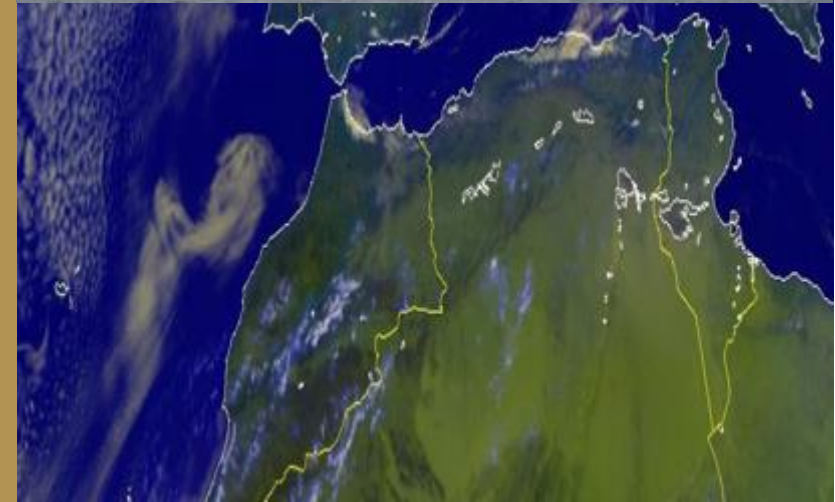
- LOA: 231
- LBP: 226
- Breadth: 33
- Draft: 15
- Depth: 22
- Deadweight: 81,700
- Gross Tonnage: 43,950
- Bale Capacity: 90,760
- Grain Capacity: 97,100
- Crane: Gearless
- Hatches: 7
- Holds: 7
- Propeller: Fixed Pitch
- Speed: 13.8 kn





# 81,700 DWT BULK CARRIER

Code: CVIT99178





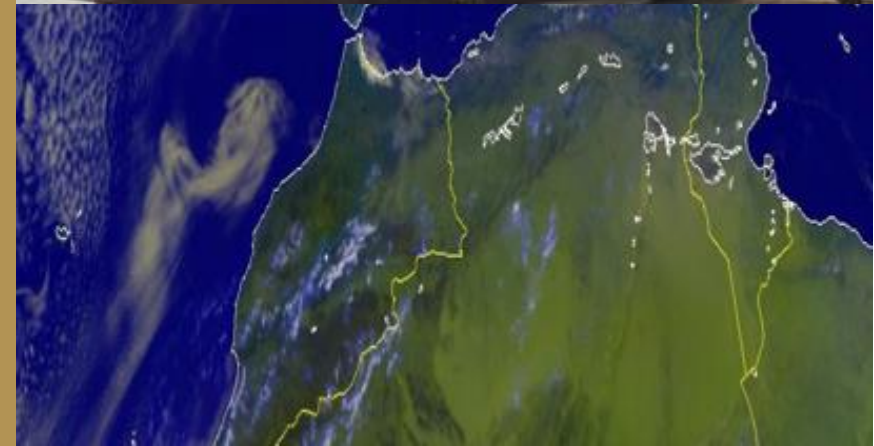
**81,800 DWT  
BULK CARRIER  
FOR CHARTER**

# 81,800 DWT BULK CARRIER

Code: CVIT99175

## DETAILS:

- YEAR OF BUILD: 2018
- BALE CAPACITY / GRAIN CAPACITY: 90,500 / 96,500
- RECENT LOCATIONS: Bohai Sea
- OPEN TERMS:

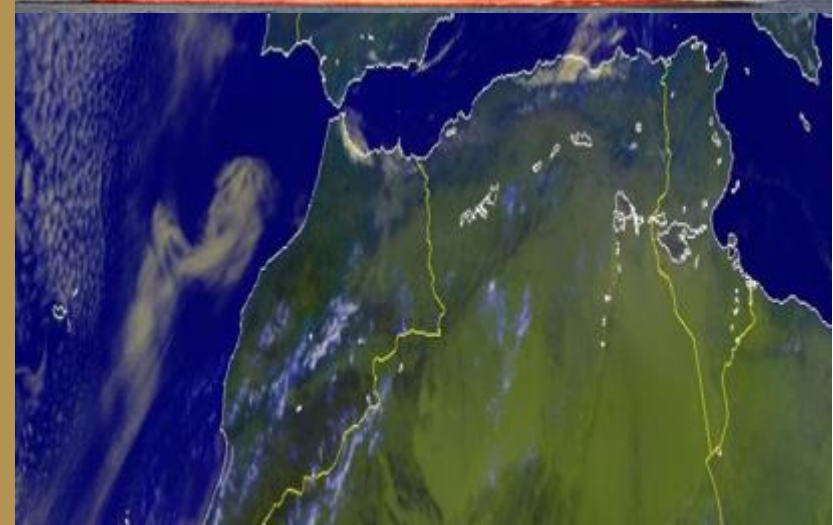


# 81,800 DWT BULK CARRIER

Code: CVIT99175

## OTHER SPECIFICATIONS:

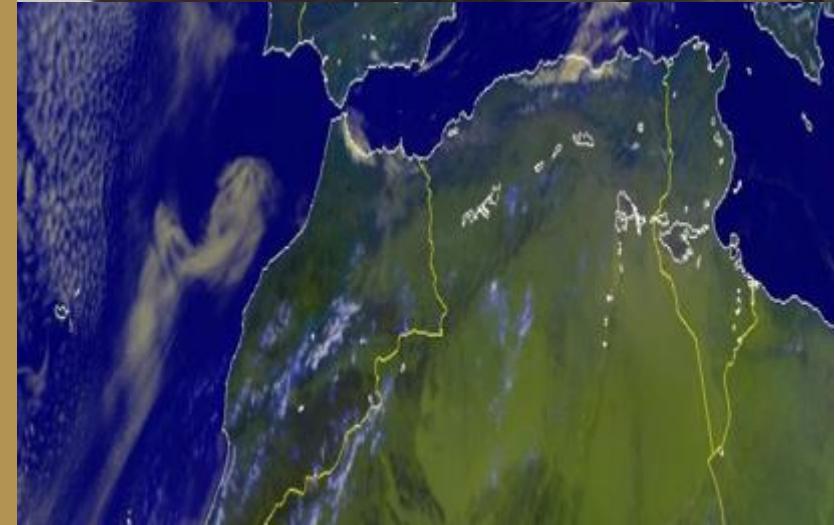
- LOA: 231
- LBP: 227
- Breadth: 34
- Draft: 16
- Depth: 21
- Deadweight: 81,800
- Gross Tonnage: 43,800
- Bale Capacity: 90,500
- Grain Capacity: 96,500
- Crane: Gearless
- Propeller: 1 Fixed Pitch
- Speed: 13.5 kn





# 81,800 DWT BULK CARRIER

Code: CVIT99175



# CONTACT US

CVIT GLOBAL SHIPMENT FZCO

Website: [www.cvitglobal.com](http://www.cvitglobal.com)

Email: [info@cvitglobal.com](mailto:info@cvitglobal.com)

Phone: +971 4 361 51 20

## Locations:

2514, Churchill Business Tower  
Business Bay, Dubai, UAE

