

# LPG CARRIERS



CVIT GLOBAL SHIPMENT FZCO



# OVERVIEW

	VESSEL REFERENCE	BUILT YEAR	CBM	Open Terms
1	CVIT14005	1990	4,325	Sale + TC
2	CVIT14006	1997	5,810	Sale
3	CVIT74139	1997	20,320	TC
4	CVIT74140	1990	73,875	TC
5	CVIT70136	2002	77,920	Sale + TC
6	CVIT14003	2006	82,000	Sale / BBHP

# OVERVIEW

**LPG CARRIER**

**4,325CBM**

**FOR SALE + TC**

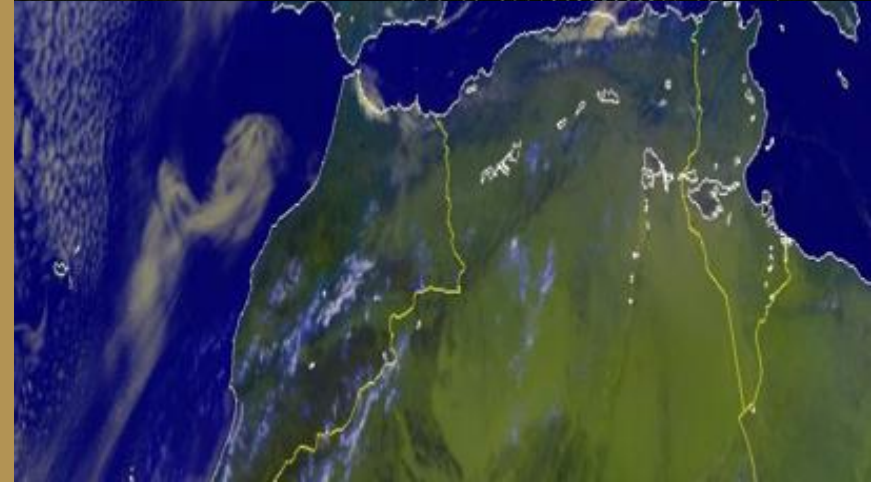


# LPG VESSEL 4,325CBM

Code: CVIT14005

## DETAILS:

- **BUILT:** 1990, South Korea
- **NUMBER OF CARGO TANKS AND TOTAL CUBIC CAPACITY (98%):** 5/4,325CBM
- **RECENT ACTIVITIES:** LPG
- **CURRENT LOCATION:** Trading in the East Mediterranean
- **OPEN TERMS:** Sale + TC



**LPG VESSEL 4,325CBM**

*Code: CVIT14005*

TECHNICAL SPECIFICATIONS:

**LOA: 99 m**

**LBP: 91 m**

**BEAM: 17 m**

**DRAFT: 7 m**

**GT: 4,085 T**

**DISPLACEMENT SUMMER: 7,516 T**

**SUMMER FREEBOARD: 4 m**

**NET TONNAGE: 1,226 T**

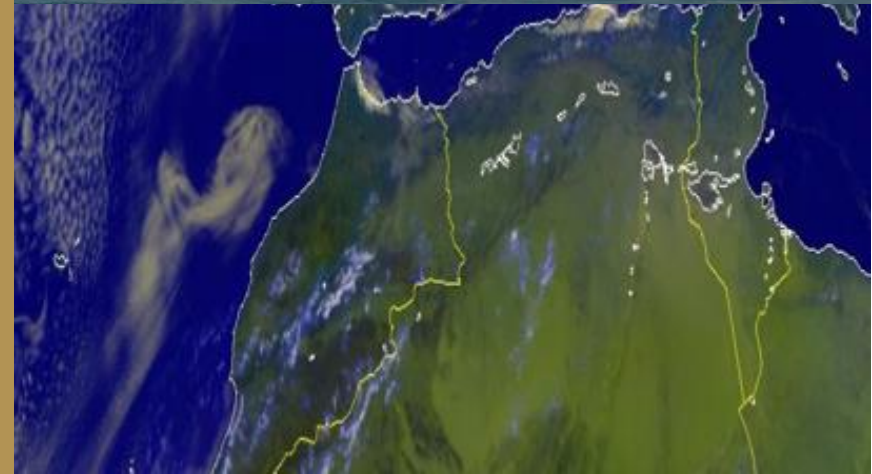
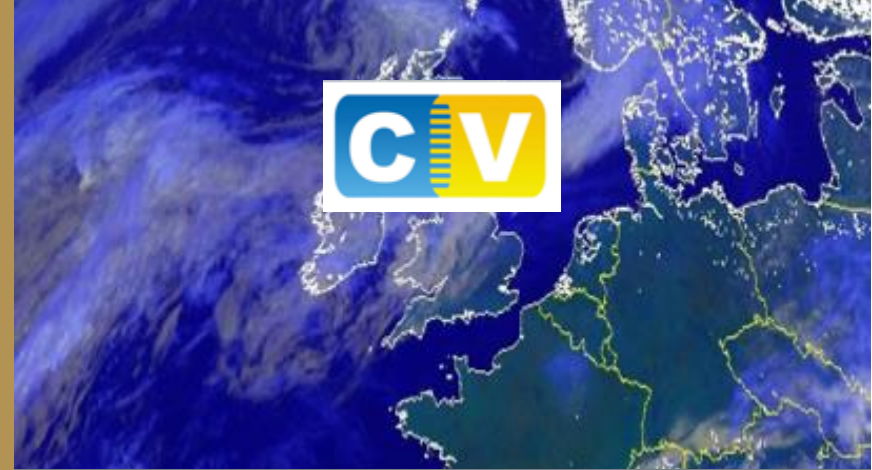
**SUMMER DWT: 4,825 T**

**HULL TYPE: DOUBLE HULL**

**LOCATION: TRADING IN THE EAST MEDITERRANEAN**

**DELIVERY: WITHIN 1 MONTH AFTER SIGNING**

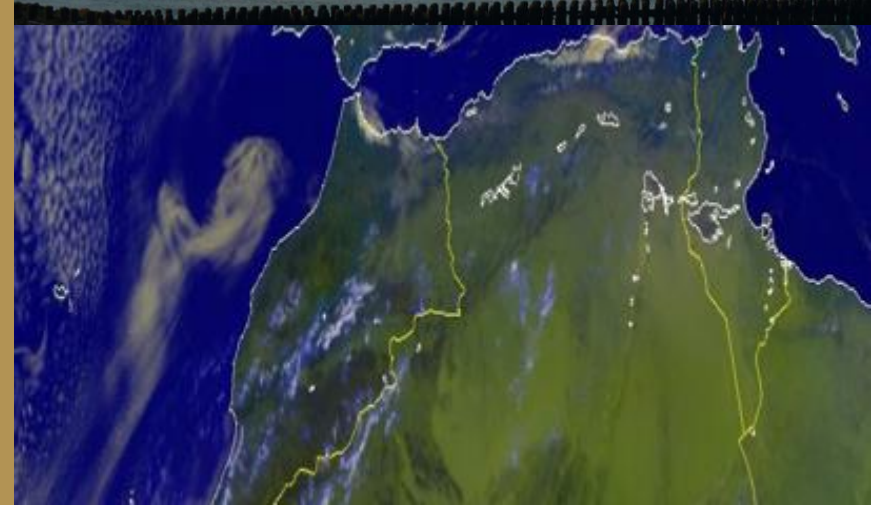
**CONTRACT**





# LPG VESSEL 4,325CBM

Code: CVIT14005



**LPG CARRIER**

**5,810CBM**

**FOR SALE**

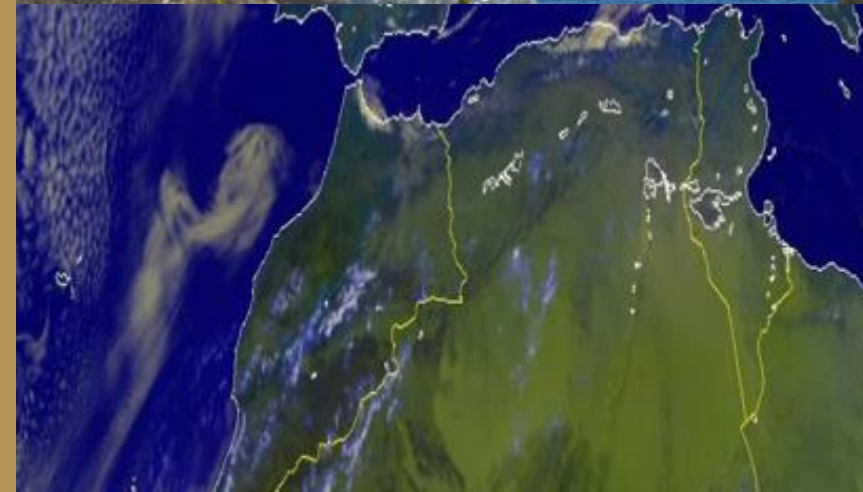


# LPG VESSEL 5,810CBM

Code: CVIT14006

## DETAILS:

- **BUILT:** 1997, UK
- **TOTAL CUBIC CAPACITY:** 5,810CBM
- **RECENT ACTIVITIES:** LPG
- **CURRENT LOCATION:** Trading in Europe
- **OPEN TERMS:** Sale





**LPG VESSEL 5,810CBM**

*Code: CVIT14006*



TECHNICAL SPECIFICATIONS:

**LOA: 116 m**

**LBP: 106 m**

**BEAM: 16.5 m**

**DRAFT: 9.5 m**

**GT: 4922 T**

**DISPLACEMENT SUMMER: 9338 T**

**FREEBOARD SUMMER: 1348 mm**

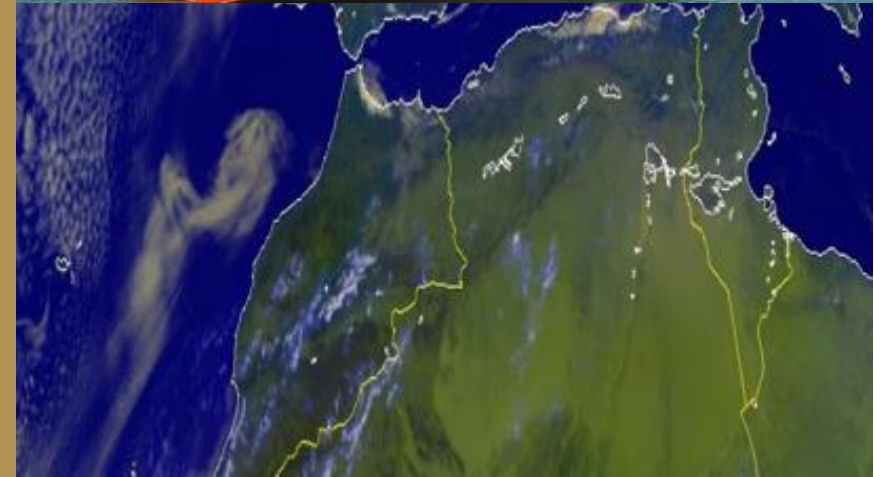
**NET TONNAGE: 1476 T**

**SUMMER DWT: 4661 T**

**HULL TYPE: DOUBLE SIDE**

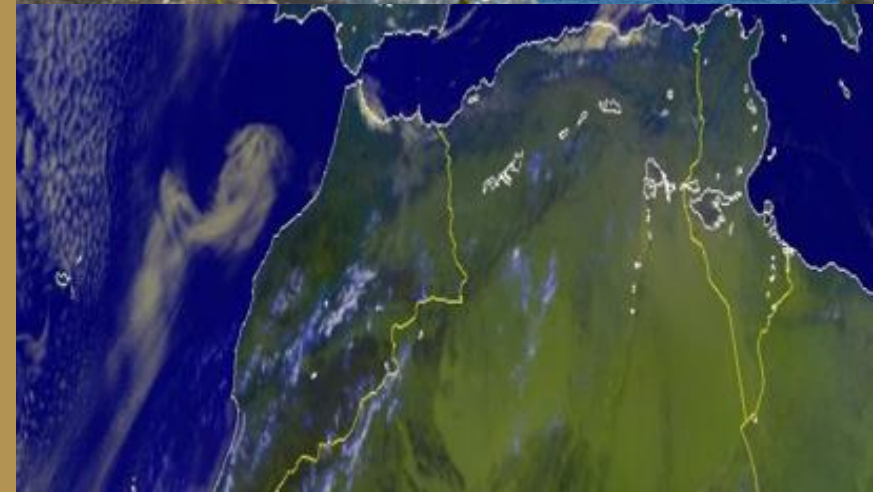
**LOCATION: TRADING IN EUROPE**

**DELIVERY: WITHIN 1 MONTH AFTER SIGNING  
CONTRACT**



# LPG VESSEL 5,810CBM

Code: CVIT14006



**LPG CARRIER**

**20,320CBM**

**FOR TC**

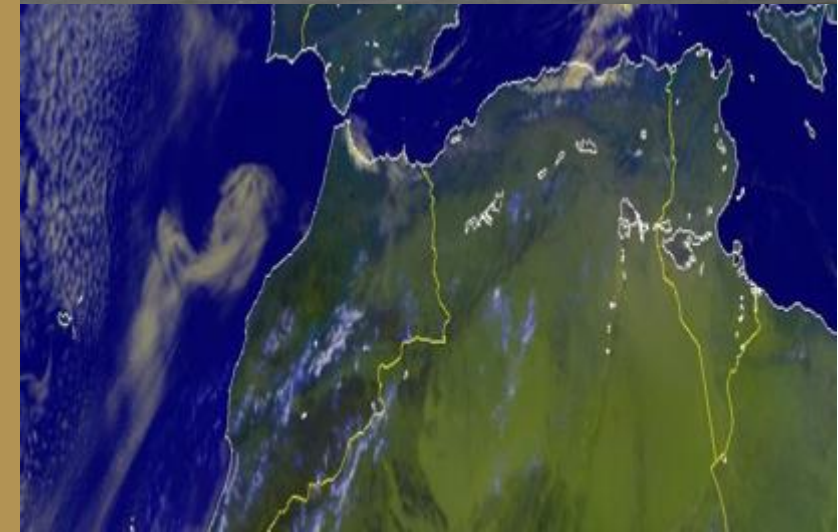


# 20,320CBM LPG VESSEL

Code: CVIT74139

## TECHNICAL DETAILS:

- YEAR OF BUILD: 1997
- TOTAL CUBIC CAPACITY (98%): 20,320 CBM
- RECENT ACTIVITIES ON: LPG
- OPEN TERMS: TC
- CURRENT LOCATION: BLACK SEA



# 20,320CBM LPG VESSEL

Code: CVIT74139

## MORE TECHNICAL SPECIFICATIONS:

**Gross Tonnage: 18529 T**

**Summer DWT: 23478 T**

**Length Overall/Beam: 161 x 26.5 m**

**Length B/W Perpendiculars: 155.5 m**

**Breadth Moulded: 26.5 m**

**Depth: 17 m**

**Draught: 11.5 m**

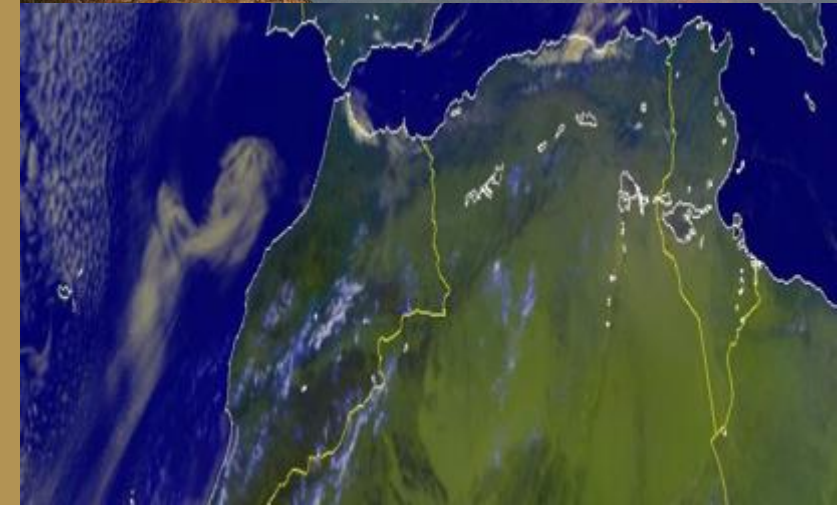
**Net Tonnage: 5550**

**Displacement Summer: 33303 T**

**Freeboard Summer: 5479 mm**

**Ballast: 9227 T**

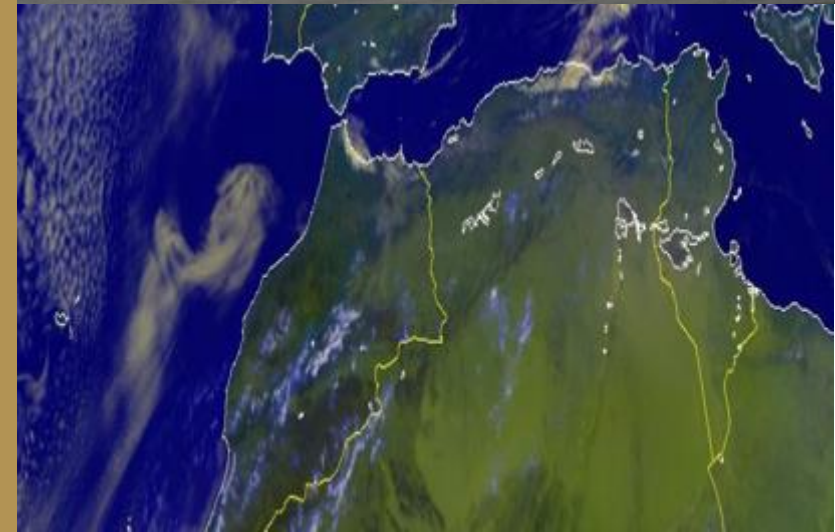
**Ballast Segregated: 9227 T**





# 20,320CBM LPG VESSEL

Code: CVIT74139





**LPG CARRIER**

**73,875CBM**

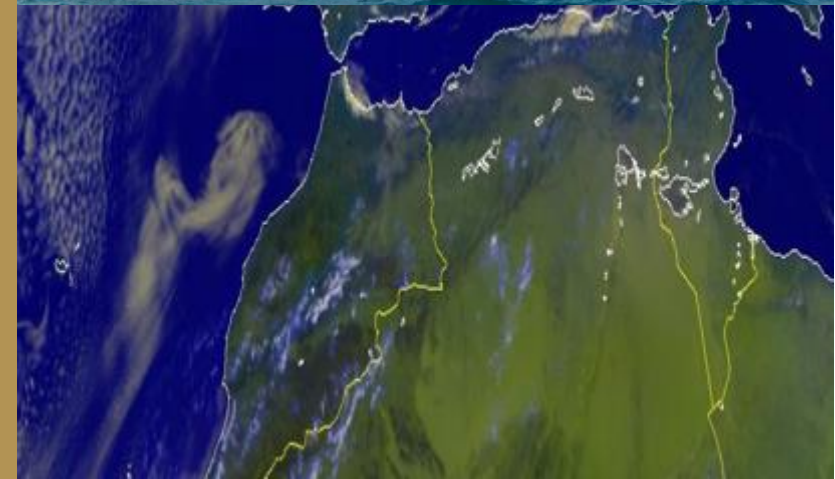
**FOR TC**

# 73,875CBM LPG VESSEL

Code: CVIT74140

## TECHNICAL DETAILS:

- YEAR OF BUILD: 1990
- TOTAL CUBIC CAPACITY (98%): 73,875 CBM
- CURRENT LOCATION: Med Sea
- RECENT ACTIVITIES: LPG in Southern Europe
- OPEN TERMS: TC



**73,875CBM LPG VESSEL**

Code: CVIT74140

MORE TECHNICAL SPECIFICATIONS:

**Gross Tonnage: 42464 T**

**Summer DWT: 49700 T**

**Length Overall/Beam: 225 x 37 m**

**Length B/W Perpendiculars: 213 m**

**Breadth Moulded: 37 m**

**Depth: 18.5 m**

**Draught: 12 m**

**Height: 49.5 m**

**Net Tonnage: 15517**

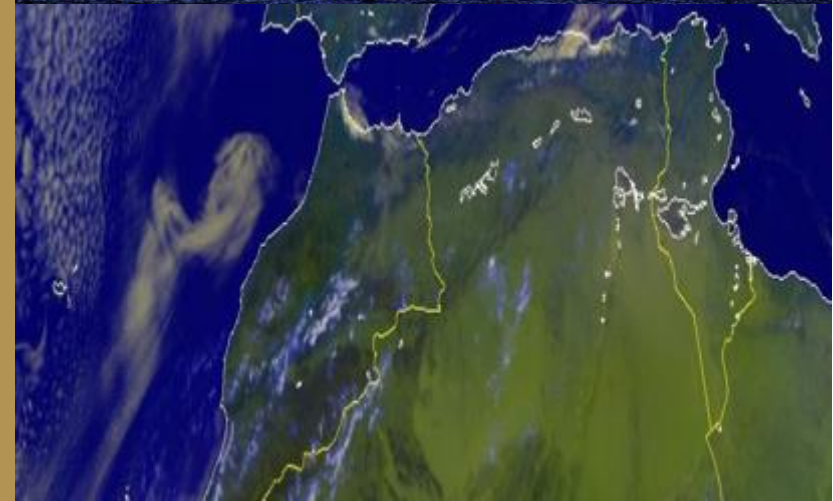
**Displacement Summer: 66130 T**

**Freeboard Summer: 9710 mm**

**Ballast: 21505 T**

**Ballast Segregated: 21505 T**

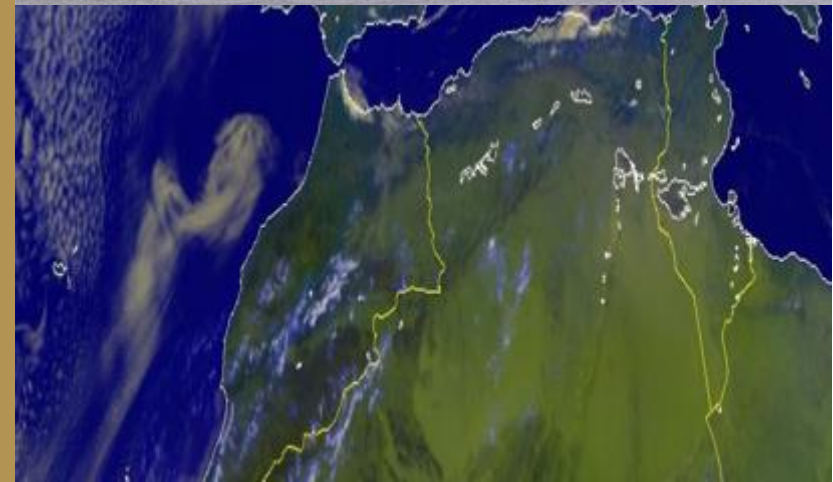
**Inert Gas System: Yes**





# 73,875CBM LPG VESSEL

Code: CVIT74140



**LPG CARRIER**

**77,920CBM**

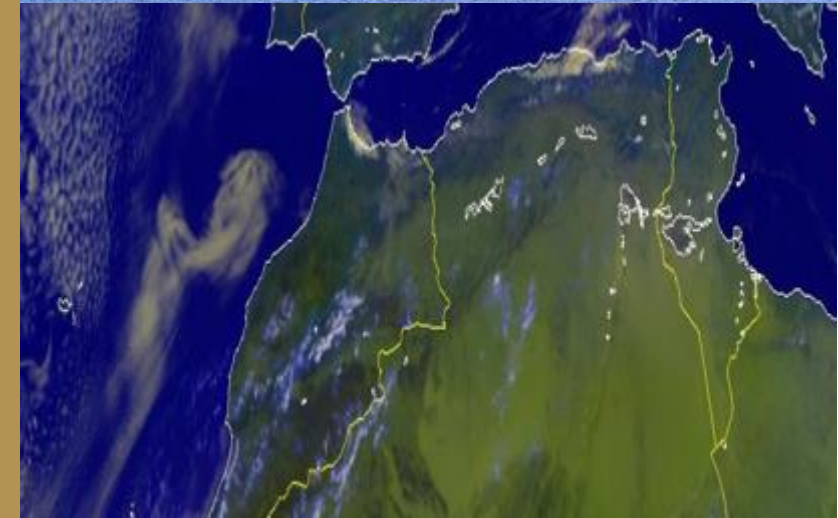
**FOR SALE + TC**

# 77,920CBM LPG VESSEL

Code: CVIT70136

## TECHNICAL DETAILS:

- YEAR OF BUILD: 2002
- NUMBER OF CARGO TANKS AND TOTAL CUBIC CAPACITY (98%): 4/77,920 CBM
- CARGO TYPE: LPG
- RECENT ACTIVITIES ON: LPG in Gulf / India Ports
- LOCATION: Trading between the Gulf Area and South Asia
- OPEN TERMS: Sale





**77,920CBM LPG VESSEL**

Code: CVIT70136

**MORE TECHNICAL SPECIFICATIONS:**

**DWT: 49993 T**

**GROSS TONNAGE: 44671 T**

**BEAM: 37 m**

**DRAFT: 11.6 m**

**DEPTH: 22 m**

**LIGHT DISPLACEMENT: 17630 T**

**NET TONNAGE: 13401 T**

**LOA: 231 m**

**LBP: 221 m**

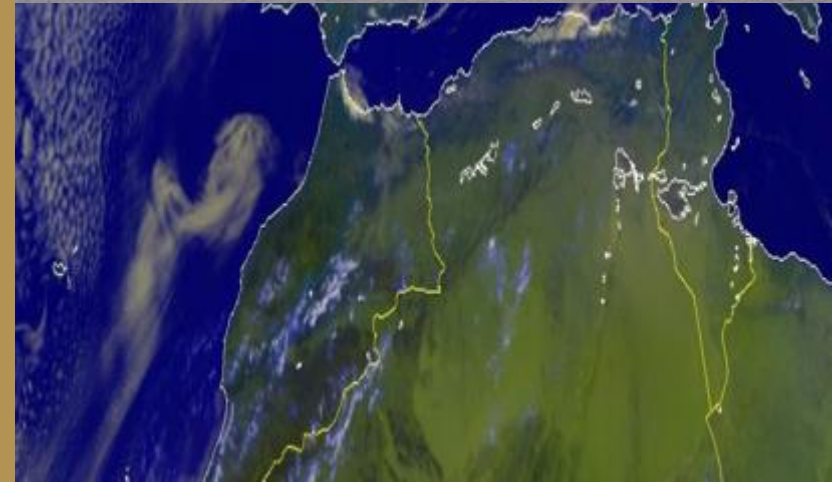
**DISPLACEMENT SUMMER: 67626 T**

**FREEBOARD SUMMER: 10.3 m**

**INERT GAS SYSTEM: YES**

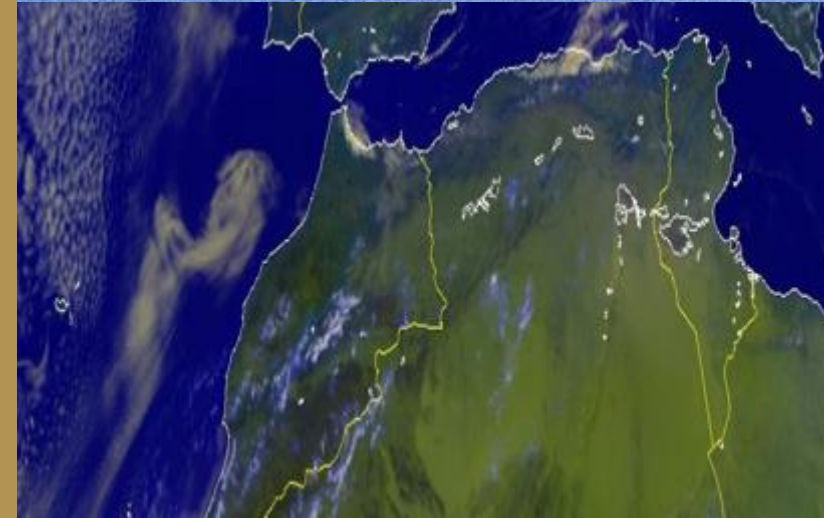
**HULL TYPE: DOUBLE BOTTOM**

**DELIVERY: WITHIN 2 WEEKS AFTER SIGNING CONTRACT**



# 77,920CBM LPG VESSEL

Code: CVIT70136



**LPG CARRIER**

**VLGC**

**82,000CBM**

**FOR SALE / BBHP**

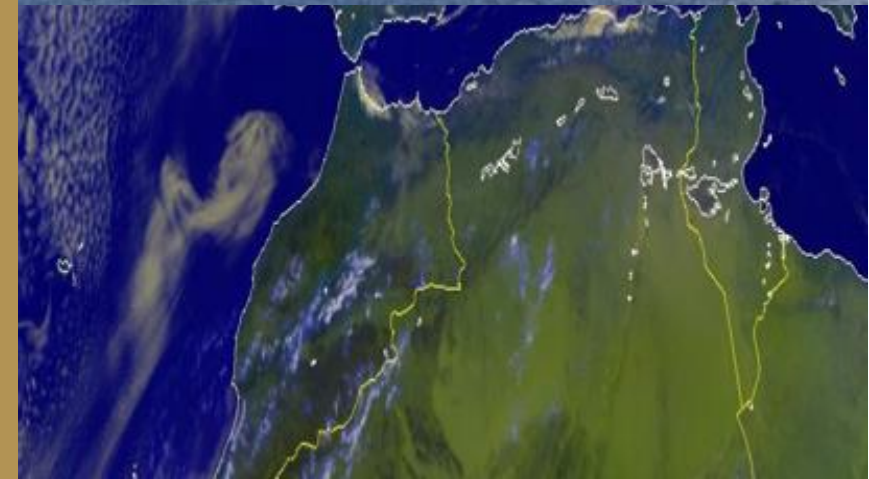


**VLGC 82,000CBM**

*Code: CVIT14003*

## DETAILS:

- **BUILT:** 2006, Korea
- **NUMBER OF CARGO TANKS:** 4
- **TOTAL CUBIC CAPACITY (98%):** 80,800CBM
- **RECENT ACTIVITIES:** LPG in Central Asia
- **CURRENT LOCATION:** Indian Ocean
- **OPEN TERMS:** Sale on Bareboat / Long Term Charter (min 1 year)



**VLGC 82,000CBM**

Code: CVIT14003



## TECHNICAL SPECIFICATIONS:

**Gross Tonnage: 47173 T**

**Summer DWT: 58585 T**

**Length Overall x Breadth Extreme: 225.27 x 36.6 m**

**Length B/W Perpendiculars: 215 m**

**Breadth Molded: 36.6 m**

**Depth: 20 m**

**Draught: 12.55 m**

**Net Tonnage: 17309**

**Summer Displacement: 77523 T**

**Freeboard Summer: 9450 mm**

**Ballast: 23640 T**

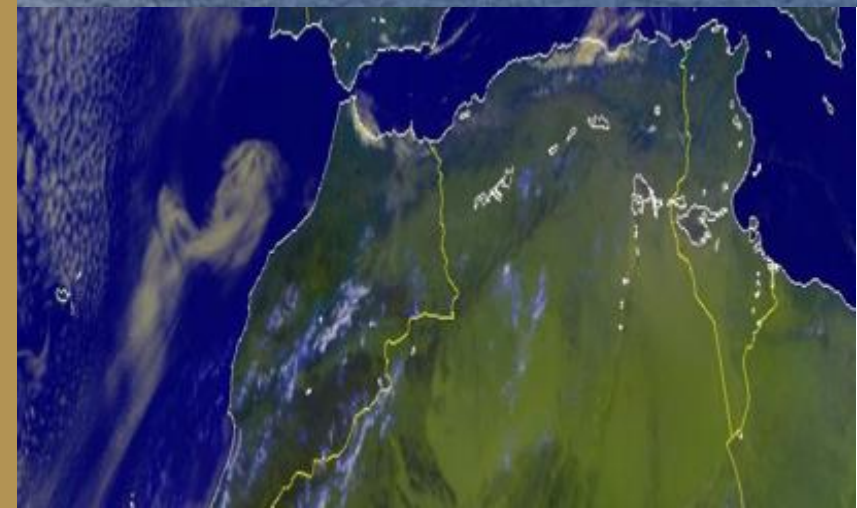
**Ballast Segregated: 23641 T**





**VLGC 82,000CBM**

*Code: CVIT14003*





# CONTACT US

Website: [www.cvitglobal.com](http://www.cvitglobal.com)

Email: [info@cvitglobal.com](mailto:info@cvitglobal.com)

Phone: +971 4 361 51 20

## Locations:

53/55 , Passeig De Gracia,  
Barcelona 08007, Spain

2514, Churchill Business Tower  
Business Bay, Dubai, UAE

