

CONTAINER
CARRIERS LANDING
CRAFTS
BARGES

CVIT GLOBAL SHIPMENT FZCO



OVERVIEW



	VESSEL REFERENCE	TYPE	BUILT YEAR	CAPACITY	Open Terms
1	CVIT90105	Container Carrier	2016	90TEU	Sale
2	CVIT90111	Container Carrier	1999	410TEU	Sale
3	CVIT90105	Container Carrier	1997	500TEU	Sale
4	CVIT90106	Container Carrier	2006	650TEU	Sale + TC
5	CVIT90103	Container Carrier	2009	960TEU	Sale
5	CVIT90104	Container Carrier	2012	1728TEU	Sale + TC
6	CVIT90107	Landing Craft	2008	52TEU + 1,400CBM	Sale
7	CVIT93100	Barge	2012	12,000DWT	Sale

OVERVIEW

A satellite-style map of Europe and the Mediterranean region, showing landmasses in green and brown and water in blue. The word 'OVERVIEW' is written in large, white, italicized letters across the map, underlined.

CONTAINER CARRIER

90 TEU

FOR SALE

CONTAINER VESSEL 90 TEU

Code: CVIT90105

DETAILS:

- **BUILT:** 2016, Japan
- **CONTAINER CAPACITY:** 90 TEU
- **LOCATION:** Trading in Domestic Area in Japan
- **CLASS:** JG Coaster
- **OPEN TERMS:** Sale
- **DELIVERY IN:** Korea
- **DELIVERY TIMING:** 3 weeks after conclusion



CONTAINER VESSEL 90 TEU

Code: CVIT90105



TECHNICAL SPECIFICATIONS:

LOA/LBP/B/D: 74.54 / 68.00 / 12.60 / 6.91 M

GRT: 498 T

DWT/DRAFT: 1,650 T / 4.05 M

M/E: HANSHIN LA32G 2,000 PS X 270 RPM X 1 SET

A/E: 6HAL2-WDT 217 PS X 1200 RPM X 1 SET

UM6BG1TCX3 290 PS X 2600 RPM X 1 SET

ANCHORAGE G/E: DD-6BG1T 91.3 KW X 1800 RPM X 1 SET

SPEED: SERVICE ABT 12.5 KNOTS, TRAIL MAX 14.063 KNOTS

HO/HA: 1 / 1

CONTAINER LOADING CAPACITY: 90 TEU

CARGO HOLD SIZE: 2,417 CBM

HATCH SIZE: 38.12 X 10.20 M

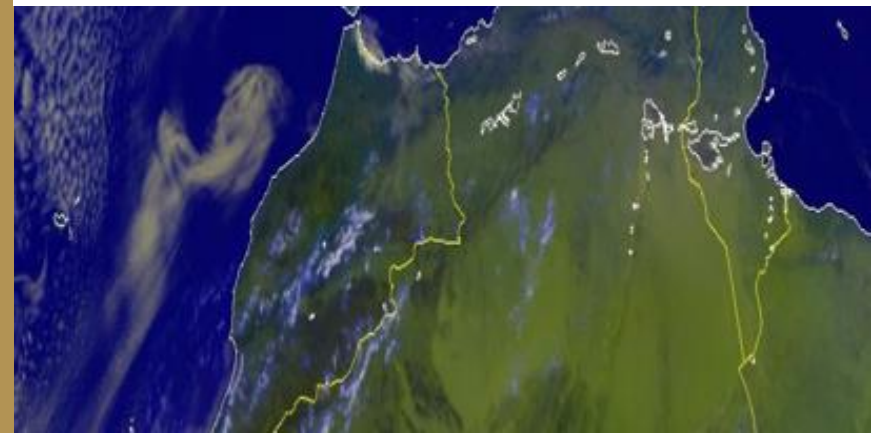
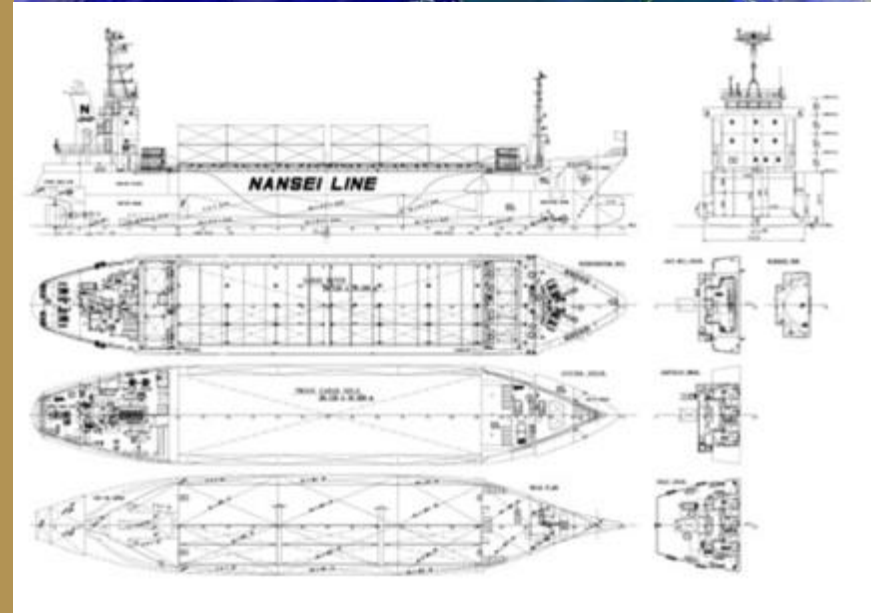
GEAR: GEARLESS,

TANK CAPACITY: WB 747, FO 68, DO 34 CBM

CREW COMPLEMENT: 6 P

NEXT SS: DEC. 21, 2021

LAST DD: FEB. 12, 2020



CONTAINER VESSEL 90 TEU

Code: CVIT90105



410TEU

CONTAINER CARRIER

FOR SALE

CONTAINER VESSEL 410 TEU

Code: CVIT90111

DETAILS:

- BUILT: 1999, Korea
- CONTAINER CAPACITY: 410 TEU
- FLAG: Panama
- LOCATION: Indian Ocean
- CLASS: CCS
- OPEN TERMS: TC + Sale
- DELIVERY TIMING: 2 weeks after conclusion
- DELIVERY IN: UAE



CONTAINER VESSEL 410 TEU

Code: CVIT90111



TECHNICAL SPECIFICATIONS:

CONTAINER SHIP (GEARLESS CELLULAR)

CLASS: CCS

BUILT: NOV. 22, 1999, DAE SUN SHIPBUILDING & ENGINEERING CO LTD., KOREA

LOA/LBP/B/D: 112.2 / 104.0 / 17.50 / 8.36 M

GRT/NRT: 4,389 / 2,059 T

DWT/DRAFT: ABT 6,272 T / 6.44 M

LDT: 2,342 T

M/E: SSANGYONG MAN B&W 7L32/40, 3,360 KW X 750 RPM X 1 SET

G/E: HYUNDAI HFJ6 454-64K, 680 HP X 1,200 RPM X 2 SETS

CONTAINER CAPACITY: TOTAL 411 TEU / 300 TEU FOR 14 T, 40 REEFER PLUGS

HATCH SIZE: NO. 1, 12.54 X 7.80 M, NO. 2-3, 12.516 X 12.936 M

TANK CAPACITY: FO 250.75, DO 69.2, FW 109.96, WB 2,535.8 CBM

HULL MATERIAL: STEEL

PROPELLER: CONTROLLABLE PITCH X 1 SET

SPEED: MAX 14.3 KNOTS, SERVICE 12.5 KNOTS

FO CONSUMPTION: IFO180CST 9.7T AT 85% CCP

IFO180CST 11.8T AT 90% CPP

LAST/NEXT SS SURVEY: OCT., 9, 2019 / NOV., 21, 2024



CONTAINER VESSEL 410 TEU

Code: CVIT90111



**500TEU
RORO CARGO &
CONTAINER VESSEL
FOR SALE**

RORO CONTAINER / CARGO 500TEU

Code: CVIT90105

DETAILS:

- **BUILT:** 1997, Germany
- **CAPACITY:** 500 TEU
- **LOCATION:** Caribbean
- **CLASS:** BKI
- **OPEN TERMS:** Sale
- **DELIVERY:** In Caribbean
- **REMARK:** Heavy Lift Cranes



RORO CONTAINER / CARGO 500TEU

Code: CVIT90105



TECHNICAL SPECIFICATIONS:

Ro Ro CARGO / CONTAINER CARRIER WITH 1 RAMP / 1 HOLD

DWT: 5,104 T ON 6.63 M DRAFT

DECKS: 2

LOA: 101.29 M

BREADTH: 18.06 M

DEPTH: 9.70 M

GT/NT 5,752/2,579

GRAIN CAPACITY: 9,720CBM

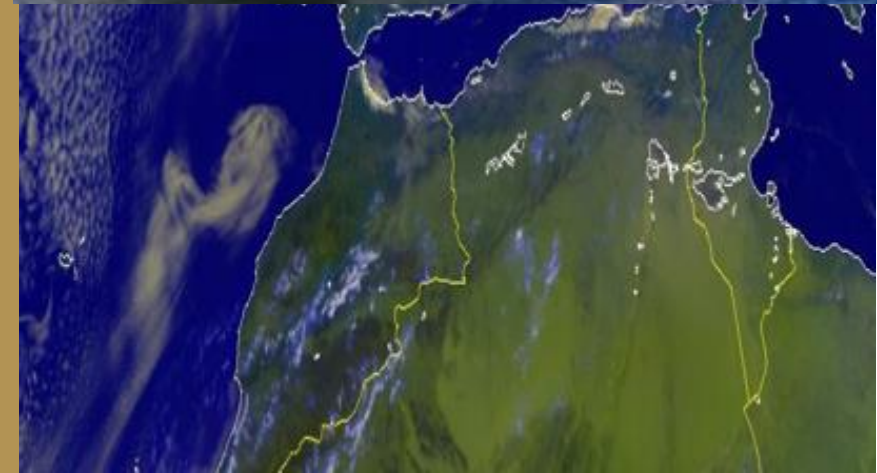
CONTAINER CAPACITY: 500TEU

CRANES:

2 CRANES 100 TONS EACH, MAN 12V32/40 7,189 BHP BOW

THRUSTER FITTED

Remark: Vessel under m/e repairs and overhaul for the next 3-4 weeks in Caribbean Can be delivered non-IACS classed and a BWTS and Dry Dock 6 months extension.



RORO CONTAINER / CARGO 500TEU

Code: CVIT90105



650 TEU

CONTAINER CARRIER

FOR SALE + TC

650TEU CONTAINER CARRIER

Code: CVIT90106

DETAILS:

- **YEAR OF BUILD:** 2006
- **CONTAINER CAPACITY:** 650TEU
- **CLASS:** DNV
- **RECENT ACTIVITIES:** Trading in Mexico – Asia Range
- **OPEN TERMS:** Sale / TC for 12 months
- **DELIVERY LOCATION:** Upon Agreement
- **DELIVERY TIMING:** One Month after Conclusion



650TEU CONTAINER CARRIER

Code: CVIT90106

TECHNICAL DETAILS:

ABT 11,509 DWAT ON ABT 8,8M

BLT 4/2006 BY YANGFAN GROUP CO LTD, CHR

DIM: 139 / 129 X 22,6 X 11,8M

9,981 GT

4 CELLULAR HOLDS

4 HATCHES - MACGREGOR PONTOON COVERS

GEAR: 2 X 45T CRANES

CONTAINER: 650 TEU, INCL. 158 REEFER POINTS

M/E: MAN 8L48/60B - 13,052 BHP AT 500 RPM SHAFTGEN 2000KW -

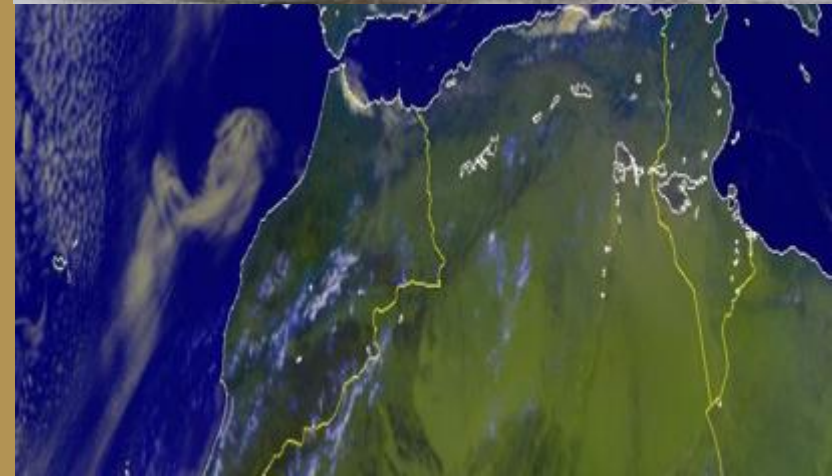
2X AUX MAN 910KW + 1X EMERGENCY MAN 577KW

SPEED/CONS: ABT 9/14,2/16/17.4KN ON 16/28/41/44T (INCL. SHAFTGEN)

2X BOWTHRUSTER 500/300KW CP2/AHL FITTED

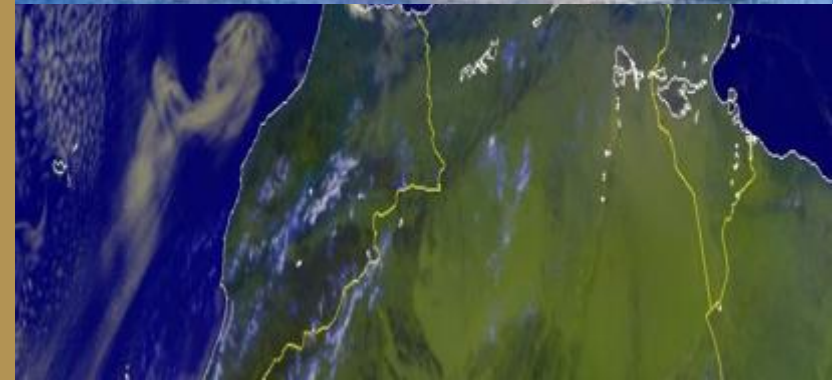
LDT : ABT 5,545 TONS

SS + DD PASSED 4/2021, SS DUE 4/2026



650TEU CONTAINER CARRIER

Code: CVIT90106



960 TEU

CONTAINER CARRIER

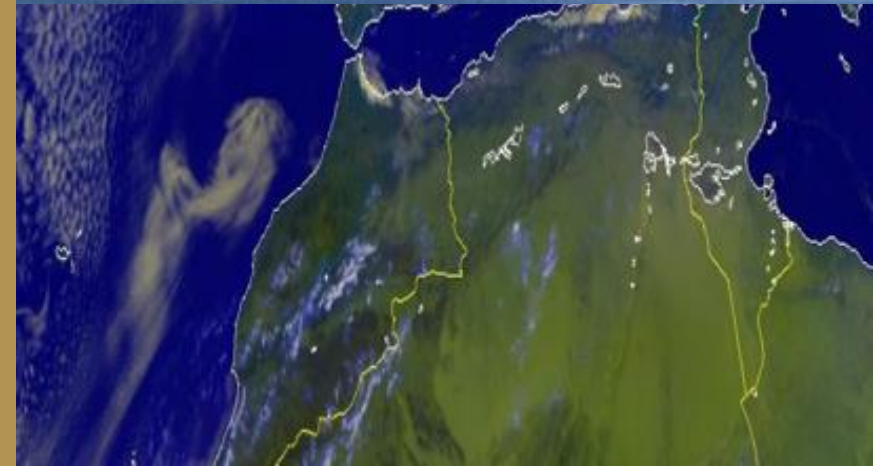
FOR SALE

CONTAINER VESSEL 960 TEU

Code: CVIT90103

DETAILS:

- **BUILT:** 2009, China
- **CONTAINER CAPACITY:** 960 TEU
- **LOCATION:** Trading Worldwide
- **CLASS:** LR
- **OPEN TERMS:** Sale
- **DELIVERY:** At Singapore/ Japan range
- **Note:** Handy size bulker, Tween Decker, Able to use as Single Decker



CONTAINER VESSEL 960 TEU

Code: CVIT90103



TECHNICAL SPECIFICATIONS:

LOA/B: 182.88 / 28.40

GRT/NRT: 22,998 T / 12,319 T

LDT: 10,894 T

DWT/DRAFT: ABT 34,065.6 T / 15.3 M, 47.2 TPC

M/E: MAN-B&W 6S50MC-C 9,480 KW X 1 SET

SPEED/CONSUMPTION: ABT. 14 KNOTS ON ABT. IFO380CST 29 T/DAY

BOX SHAPED HOLDS: LOWER HOLD: 3, 4 TWEEN DECK: 3, 4

=====

CRANE: 35 T X 1 SET(SINGLE)

1 SET (TWIN) = 40 T X 2 SETS = 80 T (USING #2 & #3 TWIN CRANES)

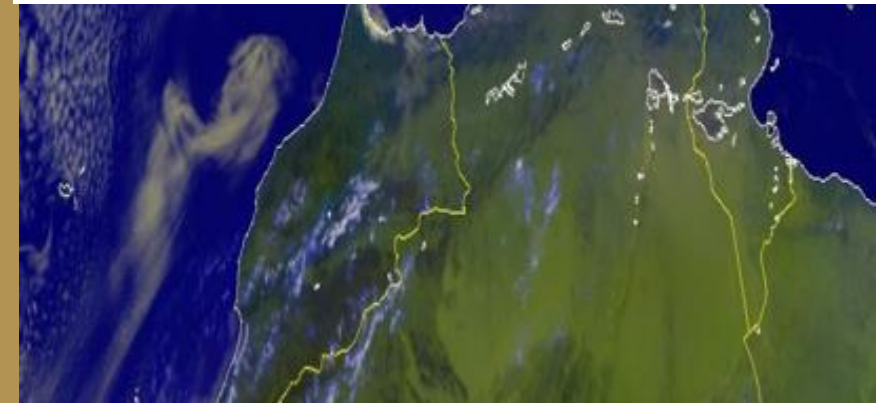
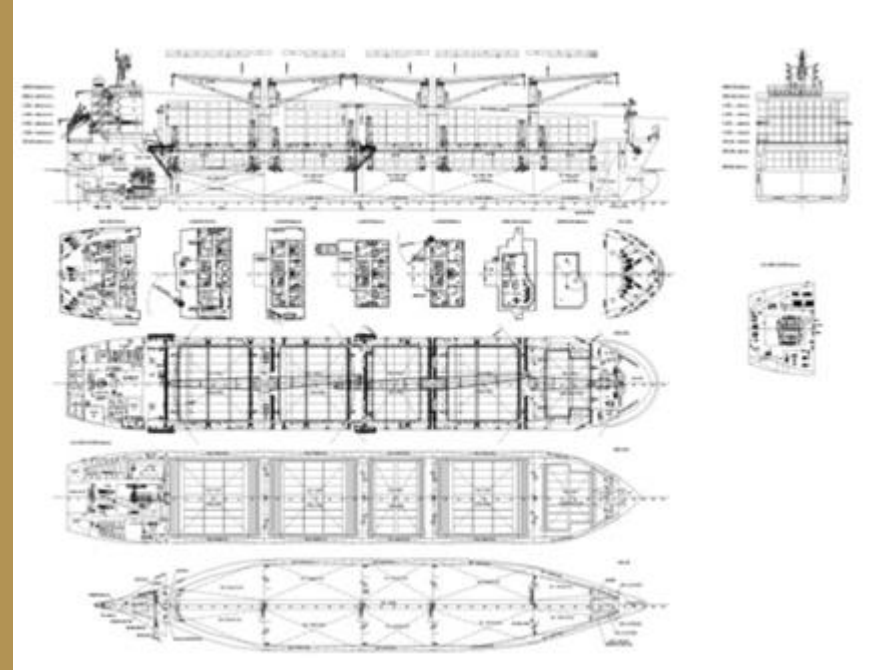
1 SET (TWIN) = 35 T X 2 SETS = 70 T (USING #4 & #5 TWIN CRANES)

LAST/NEXT SS SURVEY: JAN., 5, 2021 / JAN., 4, 2026

LAST/NEXT DD SURVEY: APR., 5, 2021 / APR., 4, 2024

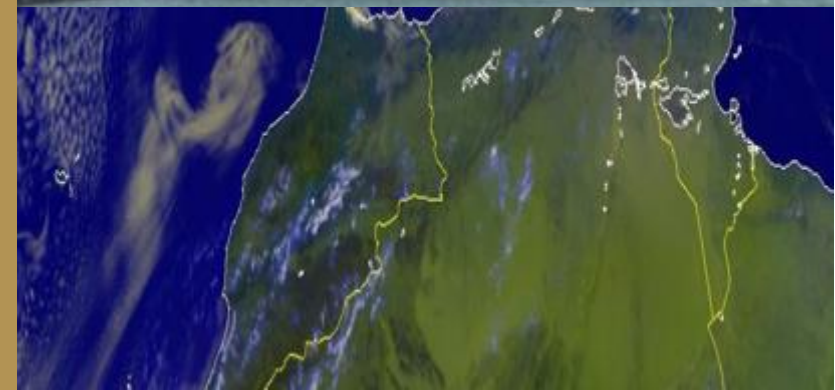
IDWAL INSPECTION REPORT IS AVAILABLE UPON REQUEST.

THERE ARE 2 OTHER SISTER VESSELS WHICH ALSO CAN BE SOLD AS ENBLOC



CONTAINER VESSEL 960 TEU

Code: CVIT90103



1728 TEU

CONTAINER CARRIER

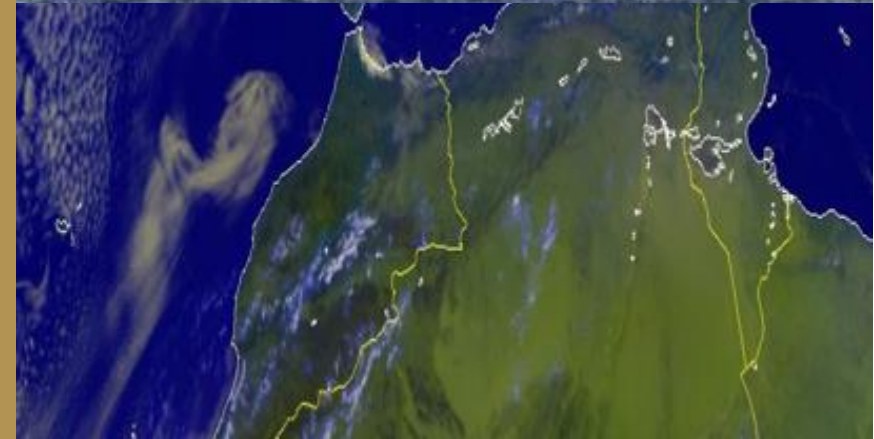
FOR SALE + TC

CONTAINER CARRIER 1728 TEU

Code: CVIT90104

DETAILS:

- **BUILT:** 2012, China
- **CONTAINER CAPACITY:** 1728 TEU
- **LOCATION:** Trading in East Asia
- **CLASS:** GL + VR
- **OPEN TERMS:** TC for 12 Month
- **DELIVERY:** Upon Agreement from 20 Dec 2021



CONTAINER CARRIER 1728 TEU

Code: CVIT90104

TECHNICAL SPECIFICATIONS:

Length B/W Perpendiculars: 171.94 m

Breadth Molded: 25.3 m

Depth: 13.5 m

Draught: 9.89 m

Gross Tonnage: 16174 T

Net Tonnage: 8675 T

Summer DWT: 23353 T

Displacement Summer: 30798 T

Length Overall x Breadth Extreme: 184.03 x 25.3 m

Decks Number: 1

Hull Type: PARTLY DOUBLE BOTTOM

Engine Power: 13320 kw

Speed: full/laden: 18 knot/17.5knot.

Cons: IFO: 25MTS/MGO: 3.5MTS

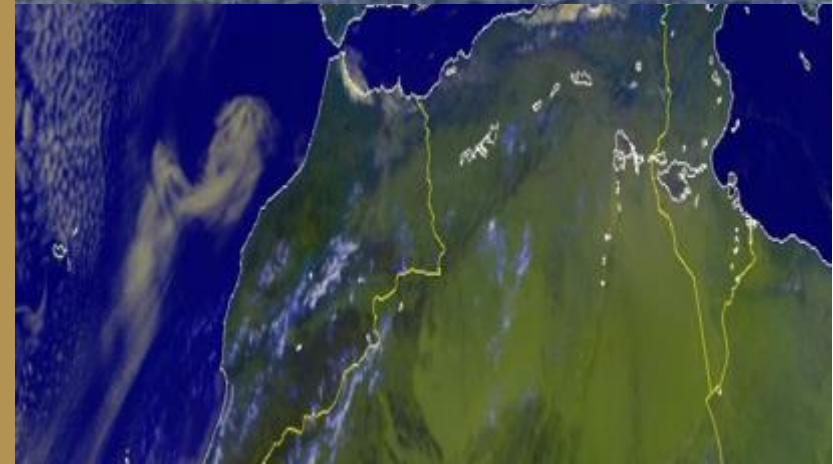
Eco condition: speed/cons: laden: 13knot/17mt/ballast:

13.5knot/16.8mts



CONTAINER CARRIER 1728 TEU

Code: CVIT90104



LCU

(Landing Craft Utility)

52 TEU + 1,400CBM Fuel

FOR SALE

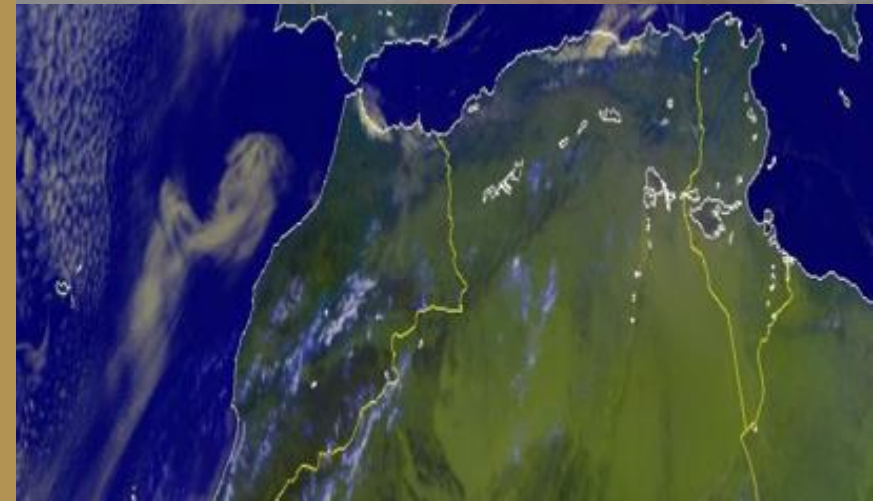
LCU 52TEU + 1,400CBM

Code: CVIT90107



DETAILS:

- **BUILT:** 2008, Indonesia
- **CONTAINER CAPACITY:** 52 TEU (Double Deck)
- **NUMBER OF CARGO TANKS:** 4
- **TOTAL CUBIC CAPACITY (98%):** 1398CBM
- **LOCATION:** Indonesia
- **CLASS:** BKI
- **OPEN TERMS:** Sale
- **DELIVERY:** Indonesia
- **Hulls:** Double Hulls/ Double Bottom



LCU 52TEU + 1,400CBM

Code: CVIT90107



TECHNICAL SPECIFICATIONS:

LOA: 64.00 M

LENGTH OF PERPANDICULARS: 59.70 M

BREATH MOULDED: 14.00 M

DEPTH MOULDED: 4.5 M

DECK LOAD: 10 T/m²

SERVICE SPEED: 9 KNOTS

COMPLEMENT: 12 People

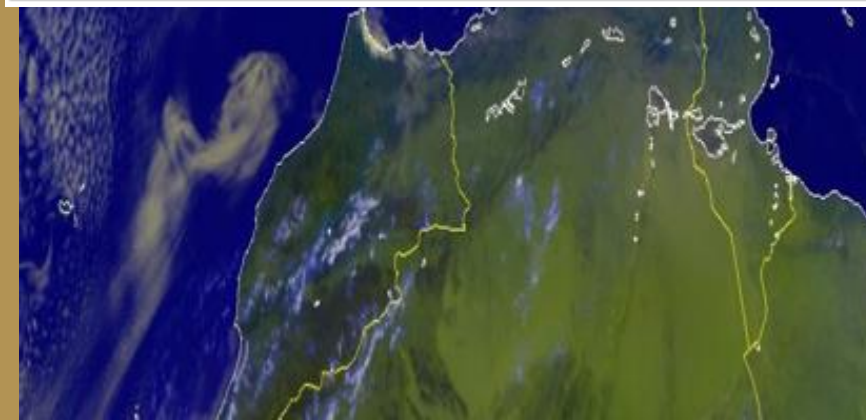
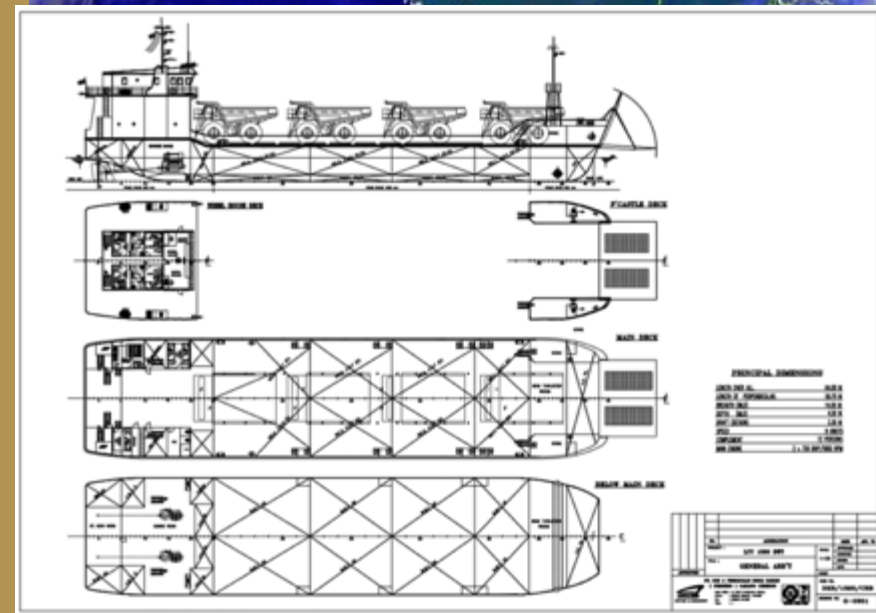
DRAFT: 3.3 M

MAIN ENGINE: 2 Units Volvo Penta D16-750MH , RPM 1900, 750 HP

Cylinder: 6

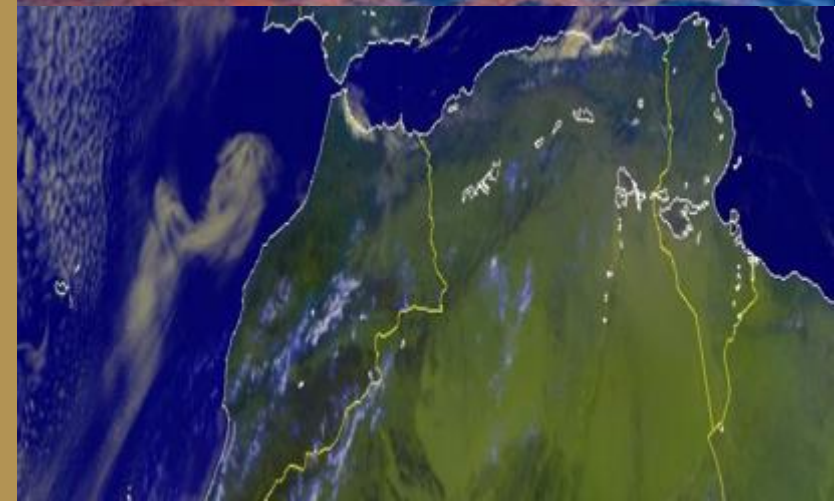
CARGO TANKS CAPACITY (CBM): 137.7 *2/213.2*2/ 213.2*2/ 248.5*2

DIESEL MOTOR: MITSUBISHI 4D34/ 64 HP/ 1,500 RPM



LCU 52TEU + 1,400CBM

Code: CVIT90107



**12,000DWT
FLAT BARGE
(NONE PROPELLED)
FOR SALE**

BARGE 12,000DWT

Code: CVIT93100

DETAILS:

- **BUILT:** 2012, China
- **Type:** Non-Propelled, With Ballast system, 12,000DWT
- **LOCATION:** Korea
- **CLASS:** KR S1
- **OPEN TERMS:** Sale
- **DELIVERY LOCATION:** Upon Agreement
- **DELIVERY TIMING:** Upon Agreement



BARGE 12,000DWT

Code: CVIT93100



TECHNICAL SPECIFICATIONS:

LOA: 92.50 M

BEAM: 36 M

DRAFT: 4.50 M

GROSS TONNAGE: 5,100 T

DECK LOAD: 10.00 T/m² BOTH FOR UNIFORM & WHEEL LOADS

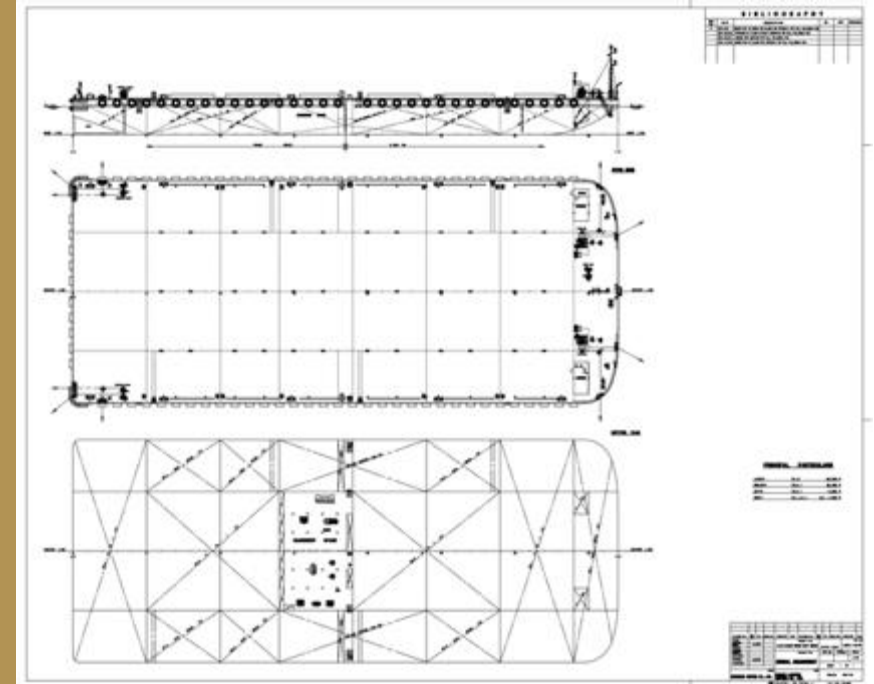
MAIN GENERATOR: DOUSAN 224KWA

HARBOR GENERATOR: DOUSAN 24KWA

TANKS CAPACITY:

- **HEELING CONTROL TANKS: (P) 1,141 T (S) 1,153**
- **W.B.T #1: 2,430 T**
- **W.B.T #2: 2,796 T**
- **W.B.T #3: 2,516 T**
- **W.B.T #4: 2,127 T**
- **FUEL OIL TANK: 6,797 T**
- **BILGE HOLDING TANK: 11,319 CBM**
- **FRESH WATER TANK: 7,350 T**

RPM



BARGE 12,000DWT

Code: CVIT93100



CONTACT US

Website: www.cvitglobal.com

Email: info@cvitglobal.com

Phone: +971 4 361 51 20

Locations:

53/55 , Passeig De Gracia,
Barcelona 08007, Spain

2514, Churchill Business Tower
Business Bay, Dubai, UAE

